



NATIONAL INSTITUTE FOR
OCCUPATIONAL HEALTH

Division of the National Health Laboratory Service

COVID-19 and the workplace: Where are we?



Muzimkhulu Zungu



UNIVERSITEIT VAN PRETORIA
UNIVERSITY OF PRETORIA
YUNIBESITHI YA PRETORIA

Denkleiers • Leading Minds • Dikgopolo tša Dihlalefi

Objective

- To give an update on the state of COVID-19 i.e. is it still a hazard of concern in the workplace?

The Spread of a Health Condition

1 Endemic

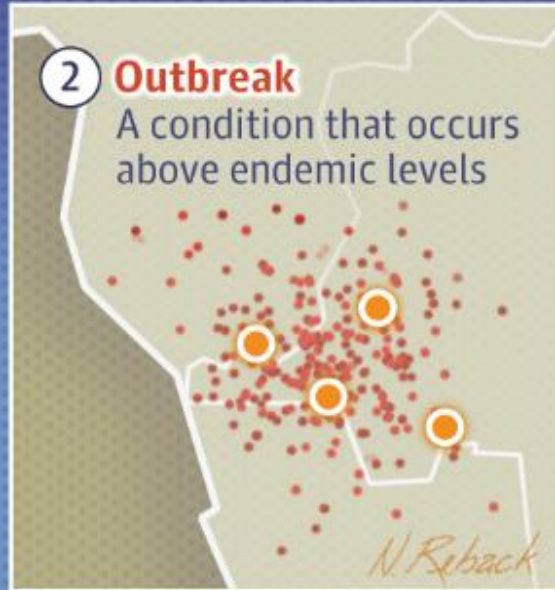
A health condition that occurs at a steady rate among a population



● = predicted occurrence

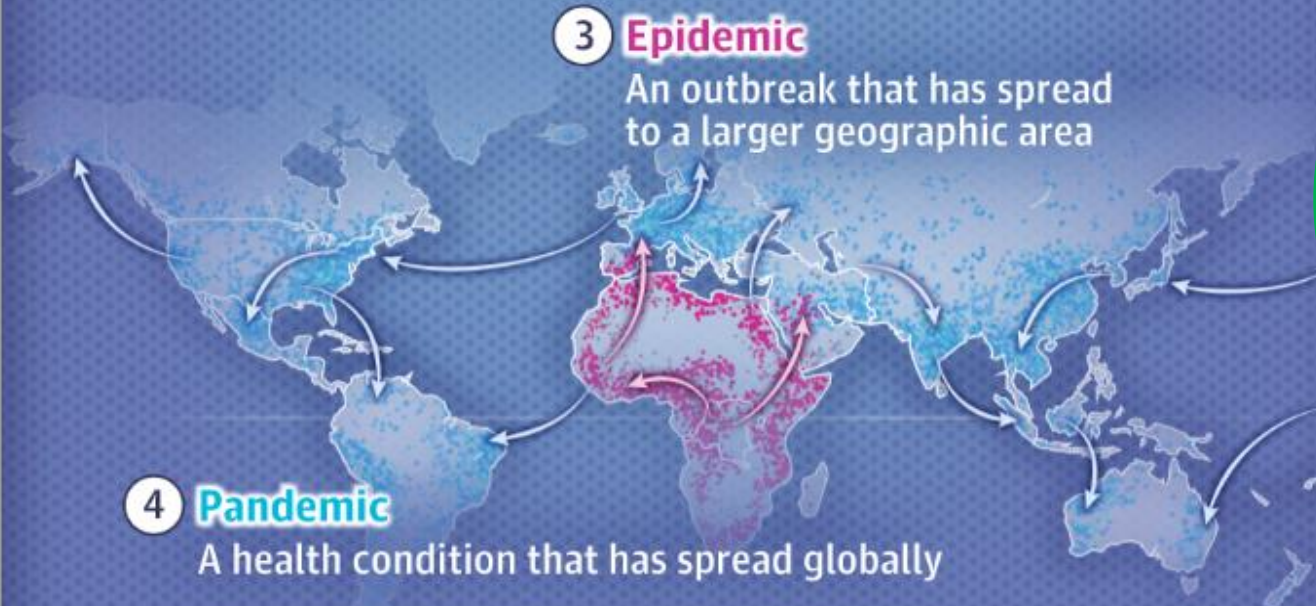
2 Outbreak

A condition that occurs above endemic levels



3 Epidemic

An outbreak that has spread to a larger geographic area



4 Pandemic

A health condition that has spread globally

Is COVID
Endemic
or
pandemic
now?

WHO
5 May
2023

COVID-19 Epidemiology

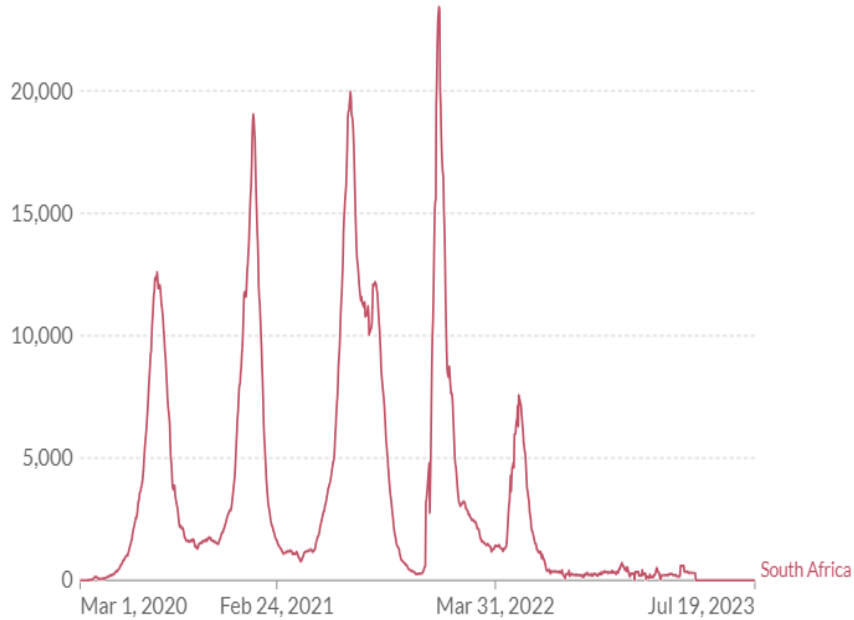
	CASES	DEATHS
GLOBAL	768,237,788	6,951,677
AFRICA	9,543,552	175,408
SOUTH AFRICA	4,055,656	102,595
SOUTH AFRICAN WORKERS	?	? NO SURVEILLANCE DATA

Daily new confirmed COVID-19 cases



7-day rolling average. Due to limited testing, the number of confirmed cases is lower than the true number of infections.

[LINEAR](#) [LOG](#) [+ Add country or region](#)



Source: WHO COVID-19 Dashboard

CC BY

▶ Jan 8, 2020 Jul 19, 2023

[CHART](#) [MAP](#) [TABLE](#) [SOURCES](#) [DOWNLOAD](#) [Share](#)

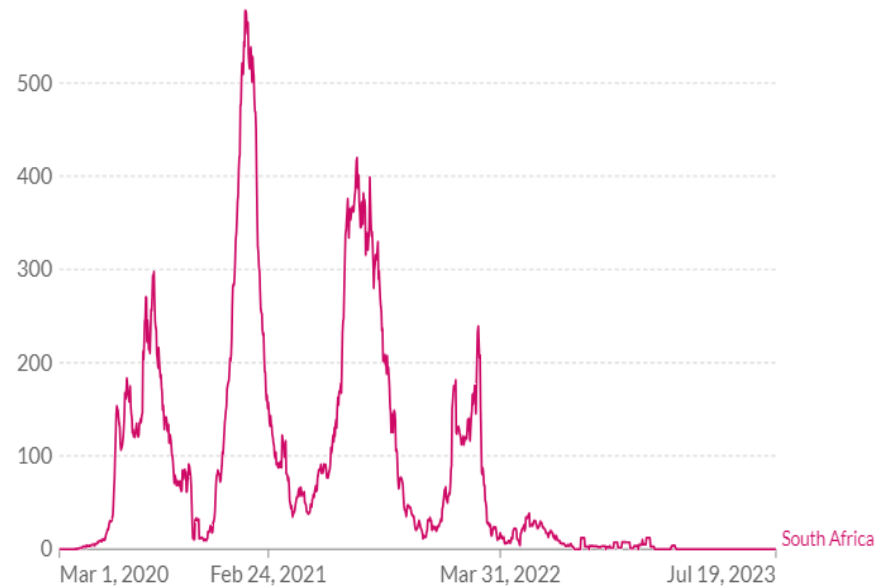
Related: [Since 8 March, we rely on data from the WHO for confirmed cases and deaths](#)

Daily new confirmed COVID-19 deaths



7-day rolling average. Due to varying protocols and challenges in the attribution of the cause of death, the number of confirmed deaths may not accurately represent the true number of deaths caused by COVID-19.

[LINEAR](#) [LOG](#) [+ Add country or region](#)



Source: WHO COVID-19 Dashboard

CC BY

▶ Jan 8, 2020 Jul 19, 2023

[CHART](#) [MAP](#) [TABLE](#) [SOURCES](#) [DOWNLOAD](#) [Share](#)

Related: [Since 8 March, we rely on data from the WHO for confirmed cases and deaths](#)

Policy direction

Pillar 3

Protecting workers in the workplace

- ▶ Strengthen OSH measures
- ▶ Adapt work arrangements (e.g. teleworking)
- ▶ Prevent discrimination and exclusion
- ▶ Provide health access for all
- ▶ Expand access to paid leave

REPUBLIC OF SOUTH AFRICA

No. 85 of 1993: Occupational Health and Safety Act
as amended by
Occupational Health and Safety Amendment Act, No. 181 Of 1993

No. R.

2020

**COMPENSATION FOR OCCUPATIONAL INJURIES AND
DISEASES ACT, 1993 (ACT NO 130 OF 1993)**

**NOTICE ON COMPENSATION FOR OCCUPATIONALLY-ACQUIRED NOVEL CORONA
VIRUS DISEASE (COVID-19) UNDER COMPENSATION FOR OCCUPATIONAL INJURIES
AND DISEASES ACT, 130 of 1993 AS AMENDED**

STAATSKOERANT, 24 JUNIE 2022

No. 46596 3

GOVERNMENT NOTICES • GOEWERMENTSKENNISGEWINGS

Department of Employment and Labour

NO. R. 2191

24 June 2022

**CODE OF PRACTICE: MANAGING EXPOSURE TO SARS-COV-2 IN THE
WORKPLACE, 2022**

COVID-19 workplace next steps

- Risk Assessment
- Occupational Health Surveillance (including screening)
- Education & training

- Vaccinations
- Appropriate referrals for treatment & care
 - LONG COVID!!!

- EHW
- Mental health
- Life skills

- COIDA
- Leave
- Advise on other insurance benefits
- Employee accommodation

Ngiyabonga