

THE NATIONAL INSTITUTE FOR OCCUPATIONAL HEALTH (NIOH)

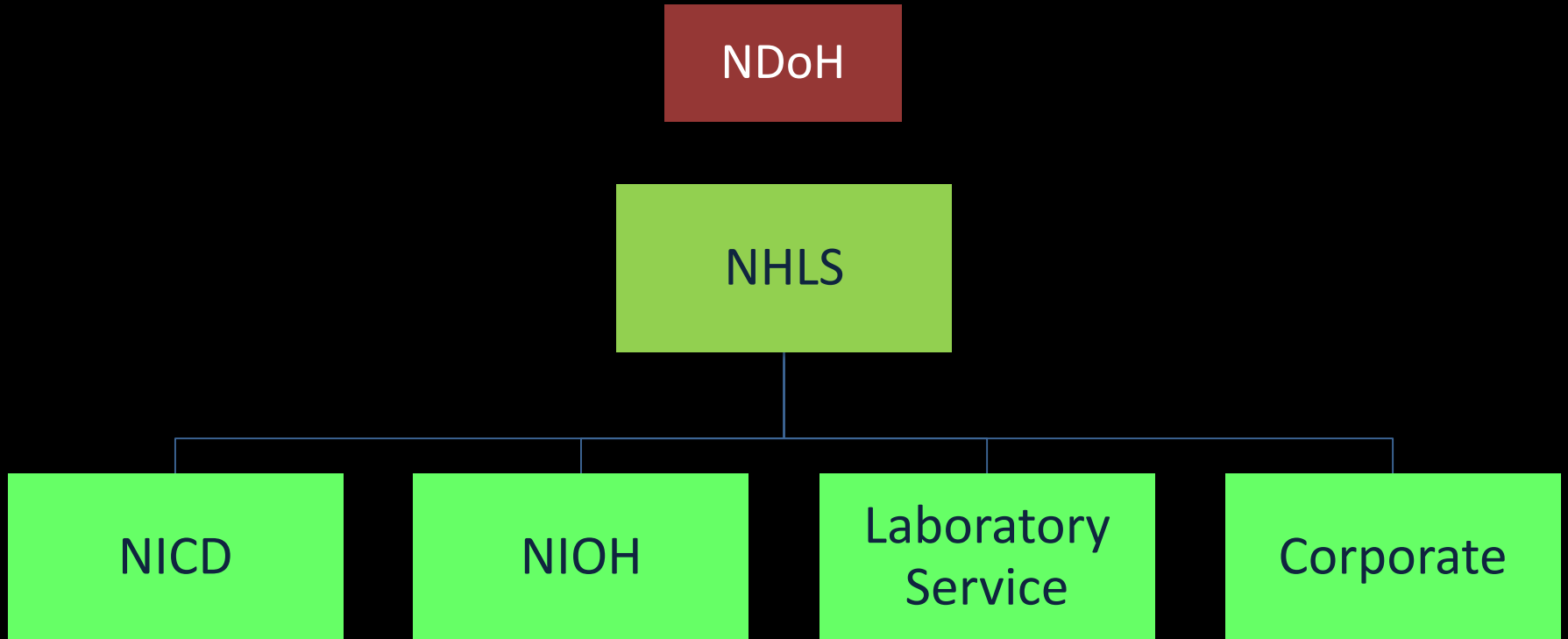
Dr Spo Kgalamono

NIOH
NATIONAL INSTITUTE FOR OCCUPATIONAL HEALTH
NATIONAL HEALTH LABORATORY SERVICE
25 HOSPITAL STREET

THE
NIOH



MACRO STRUCTURE



NIOH Mandate

- Multi-disciplinary and functions to develop and support OHS in the country
- The work of this institute is a mixture of technical/professional activities to **support** the development of policy, professional capacity, legislation and regulation
- Provides coordinated disease and injury surveillance, specialised and strategic services, including **specialised** laboratory services

NIOH Partnerships

Government &
Public Entities

Services

Surveillance

Trade Unions,
NGOs &
Business

Education /
Training

Research

Local &
International
Partnerships

Professional
Societies (SASOM,
SASOHN, SAIOH,
etc)

Universities and
other Institutions



Partnerships - Nurturing a culture of sustainable prevention

- ❖ The NIOH is a **World Health Organization** (WHO) Collaborating Centre [CC] for Occupational Health.
 - ❖ NIOH was recently nominated as a **Centre of Excellence** by the Mine Health and Safety Council (MHSC)
 - ❖ The Institute works closely with **the International Labor Organization** (ILO) to further align with international best practice and runs several research projects with WHO.
 - ❖ This multidisciplinary institute has **SANAS accredited specialized laboratories** and boasts highly qualified occupational health and occupational hygiene specialists who are committed to working with as many businesses and government role-players as possible towards achievement of a shared vision for healthier, safer and more sustainable workplaces.
-



NATIONAL INSTITUTE FOR
OCCUPATIONAL HEALTH

Division of the National Health Laboratory Service



Healthy Workers and Safe Workplaces

- The NIOH provides Occupational and Environmental Health & Safety [OEHS] services across the public and private sectors of the economy – PUBLIC GOOD
- Primarily these services are provided to improve and promote workers' health and safety but also very importantly to be a consistent catalyst for a mind set change towards greater **prevention** in OEHS

The institute achieves this through:

- ❖ SPECIALISED SERVICES
- ❖ KNOWLEDGE GENERATION AND INNOVATION
- ❖ TEACHING & TRAINING



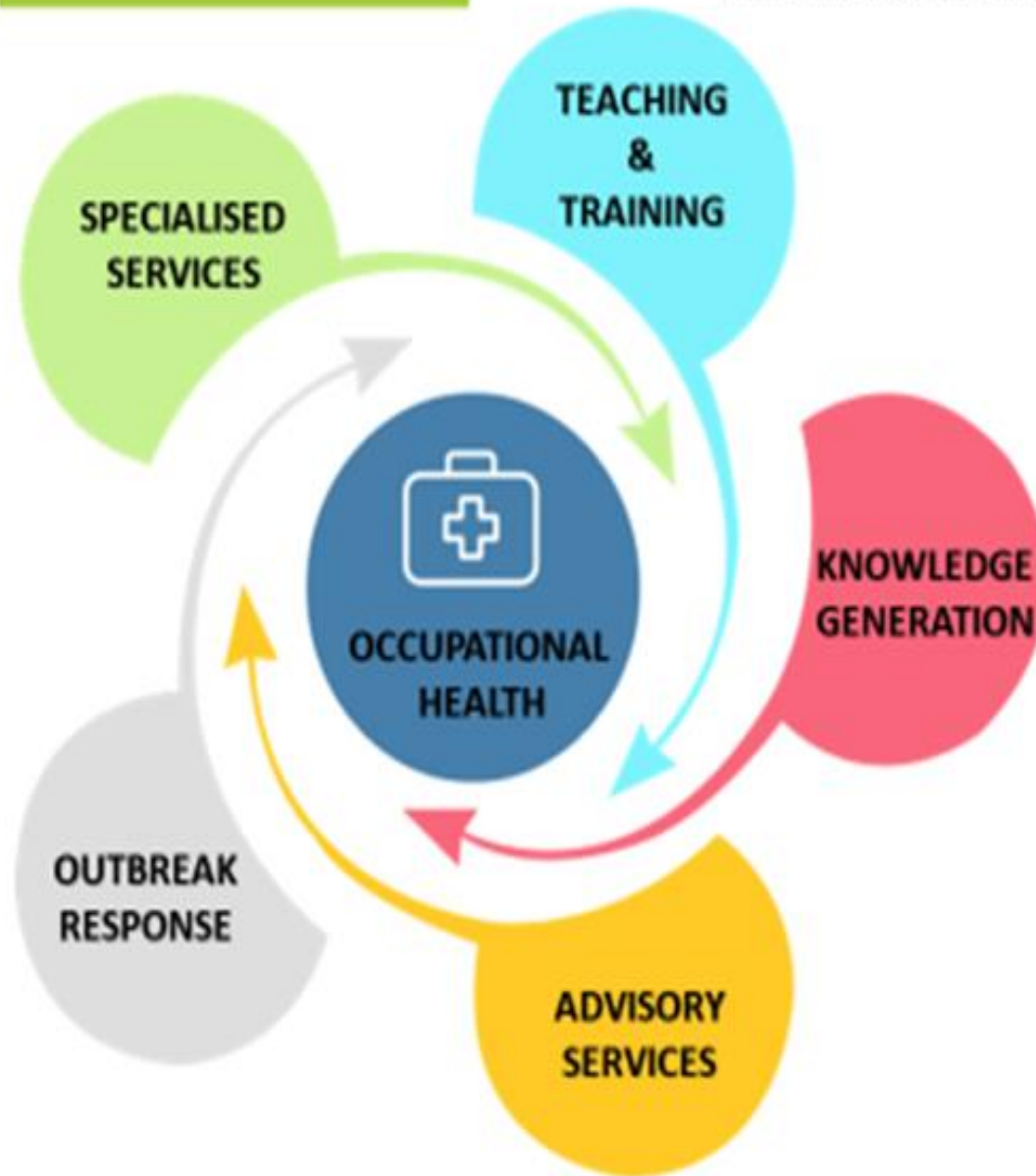


NATIONAL INSTITUTE FOR
OCCUPATIONAL HEALTH

Division of the National Health Laboratory Service

Healthy, Safe and Sustainable Workplaces

PROMOTING DECENT WORK THROUGH CUTTING EDGE
RESEARCH SERVICE DELIVERY AND TRAINING



Improve and promote workers' health and safety



Catalyst for a mind set change towards greater [prevention](#)



Inform regulation, policy and standards



Public and private sectors of the economy



Formal and informal economies



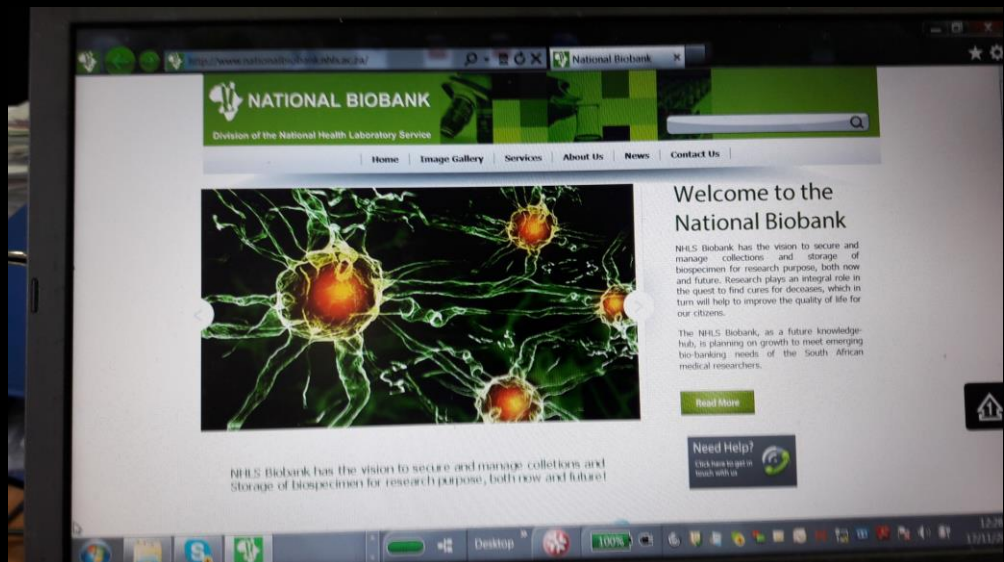
Services/ Sections

- Pathology services (autopsy service)
- Occupational Medicine
- Occupational Hygiene
- Micro & Immunology
- Toxicology
- Epidemiology and surveillance
- Analytic Chemistry
- HIV/TB and Health Systems



Services

- Information services
 - Query handling
 - Resource centre
 - Electronic journals
 - eLearning platform
- SHE
- Biobank & Quality



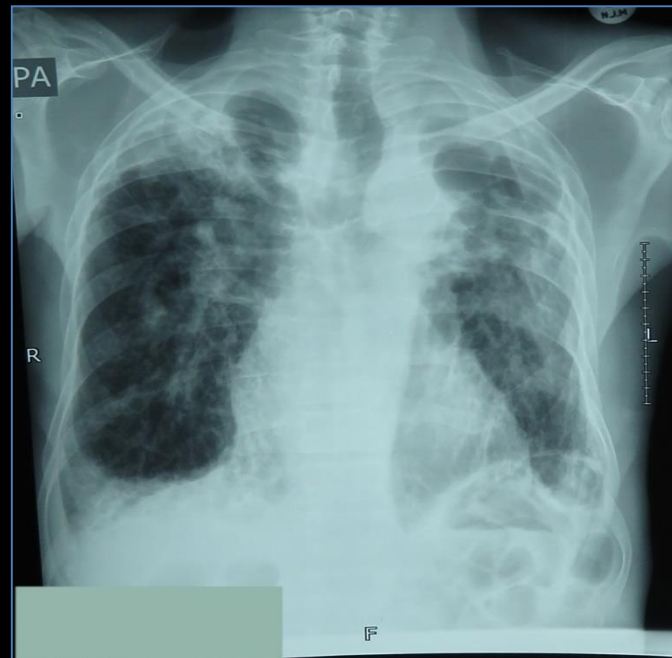


NATIONAL INSTITUTE FOR
OCCUPATIONAL HEALTH

Division of the National Health Laboratory Service

Specialized Services

- ❖ The NIOH provides specialized services to national and provincial government departments, employer organizations, trade unions and enterprise level OEHS services.
- ❖ These include:
 - ❖ **discipline specific advisory services on OEHS**
 - ❖ policy development, medical surveillance, HIV & TB workplace programmes, health systems,
 - ❖ **biological monitoring, prevention and hazard control, research protocol development**
 - ❖ microbial air sampling, allergy diagnostics, nanoparticles and
 - ❖ ***in-vitro* risk assessments among other areas**





Specialized Services

- ❖ Robust advisory services that are particularly useful for small and medium enterprises
- ❖ NIOH houses the national OH library and provides information on request
- ❖ NIOH Clinic - the largest of the 3 occupational medicine clinics in the country
- ❖ Conduct autopsies for deceased current and former mineworkers in terms of the Occupational Disease in Mines and Works Act (ODMWA), which provides compensation for occupational lung disease.





**NATIONAL INSTITUTE FOR
OCCUPATIONAL HEALTH**

Division of the National Health Laboratory Service

Knowledge Generation & Innovation

- ❖ As a centre of excellence and a referral institute, NIOH engages in activities that generate and improve local, regional and international knowledge through research in the fields of OEHS.
- ❖ The research is in line with the priorities of the Republic of South Africa and the African Region.
- ❖ The NIOH collaborates with local and international institutions of higher learning to redress the legacy OEHS issues in SA and the African Region in particular.





Teaching & Training

The NIOH works closely with several academic institutions and provides teaching and training in many OEHS disciplines to produce the next generation of OEHS professionals and practitioners.

In the training sector, our goals with regard to impact are:

- ❖ A healthy and safe work environment.
- ❖ A healthy worker whose work ability is good.
- ❖ A work community that supports health and well-being.



Formal and Informal Training Provision

- *The School of Public Health, in association with the National Institute for Occupational Health, offers a Diploma in Occupational Health (DOH) over two years part-time.*
- *The NIOH also offers a Diploma and Masters degree in Occupational Hygiene over two or three part time years with a new intake of students every second year.*



NATIONAL INSTITUTE FOR
OCCUPATIONAL HEALTH

Division of the National Health Laboratory Service

More info : NIOH services

info@nioh.ac.za

www.nioh.ac.za

0117126400

Thank you



NATIONAL INSTITUTE FOR OCCUPATIONAL HEALTH

Division of the National Health Laboratory Service



Healthy, Safe, Happy & Sustainable Workplaces

WWW.NIOH.AC.ZA | TWITTER: @NIOH_SA | INFO@NIOH.AC.ZA