



we are one
**Sibanye
Stillwater**



Health and Wellness

NIOH Webinar: PUI COVID-19 Experience.

Dr Jameson Malemela

SVP Health and Wellness

4 August 2020

Forward looking Statements

- The information in this announcement may contain forward-looking statements within the meaning of the “safe harbour” provisions of the United States Private Securities Litigation Reform Act of 1995. These forward-looking statements, including, among others, those relating to Sibanye Stillwater Limited’s (“Sibanye-Stillwater” or the “Group”) financial positions, business strategies, plans and objectives of management for future operations, are necessarily estimates reflecting the best judgment of the senior management and directors of Sibanye-Stillwater.
-
- All statements other than statements of historical facts included in this announcement may be forward-looking statements. Forward-looking statements also often use words such as “will”, “forecast”, “potential”, “estimate”, “expect” and words of similar meaning. By their nature, forward-looking statements involve risk and uncertainty because they relate to future events and circumstances and should be considered in light of various important factors, including those set forth in this disclaimer. Readers are cautioned not to place undue reliance on such statements.
-
- The important factors that could cause Sibanye-Stillwater’s actual results, performance or achievements to differ materially from those in the forward-looking statements include, among others, our future business prospects; financial positions; debt position and our ability to reduce debt leverage; business, political and social conditions in the United States, South Africa, Zimbabwe and elsewhere; plans and objectives of management for future operations; our ability to obtain the benefits of any streaming arrangements or pipeline financing; our ability to service our bond instruments; changes in assumptions underlying Sibanye-Stillwater’s estimation of their current mineral reserves and resources; the ability to achieve anticipated efficiencies and other cost savings in connection with past, ongoing and future acquisitions, as well as at existing operations; our ability to achieve steady state production at the Blitz project; the success of Sibanye-Stillwater’s business strategy; exploration and development activities; the ability of Sibanye-Stillwater to comply with requirements that they operate in a sustainable manner; changes in the market price of gold, PGMs and/or uranium; the occurrence of hazards associated with underground and surface gold, PGMs and uranium mining; the occurrence of labour disruptions and industrial action; the availability, terms and deployment of capital or credit; changes in relevant government regulations, particularly environmental, tax, health and safety regulations and new legislation affecting water, mining, mineral rights and business ownership, including any interpretations thereof which may be subject to dispute; the outcome and consequence of any potential or pending litigation or regulatory proceedings or other environmental, health and safety issues; power disruptions, constraints and cost increases; supply chain shortages and increases in the price of production inputs; fluctuations in exchange rates, currency devaluations, inflation and other macro-economic monetary policies; the occurrence of temporary stoppages of mines for safety incidents and unplanned maintenance; the ability to hire and retain senior management or sufficient technically skilled employees, as well as their ability to achieve sufficient representation of historically disadvantaged South Africans in management positions; failure of information technology and communications systems; the adequacy of insurance coverage; any social unrest, sickness or natural or man-made disaster at informal settlements in the vicinity of some of Sibanye-Stillwater’s operations; and the impact of HIV, tuberculosis and the spread of other contagious diseases, such as coronavirus (“COVID-19”). Further details of potential risks and uncertainties affecting Sibanye-Stillwater are described in Sibanye-Stillwater’s filings with the Johannesburg Stock Exchange and the United States Securities and Exchange Commission.
-
- These forward-looking statements speak only as of the date of the content. Sibanye-Stillwater expressly disclaims any obligation or undertaking to update or revise any forward-looking statement (except to the extent legally required).

Outline of PUI Presentation

1

Acknowledgements

2

SARS-CoV-2 In Context (Preparedness)

3

SSW Case Reports and experience

4

Conclusion

5

Questions and Answers

6

Closing remarks

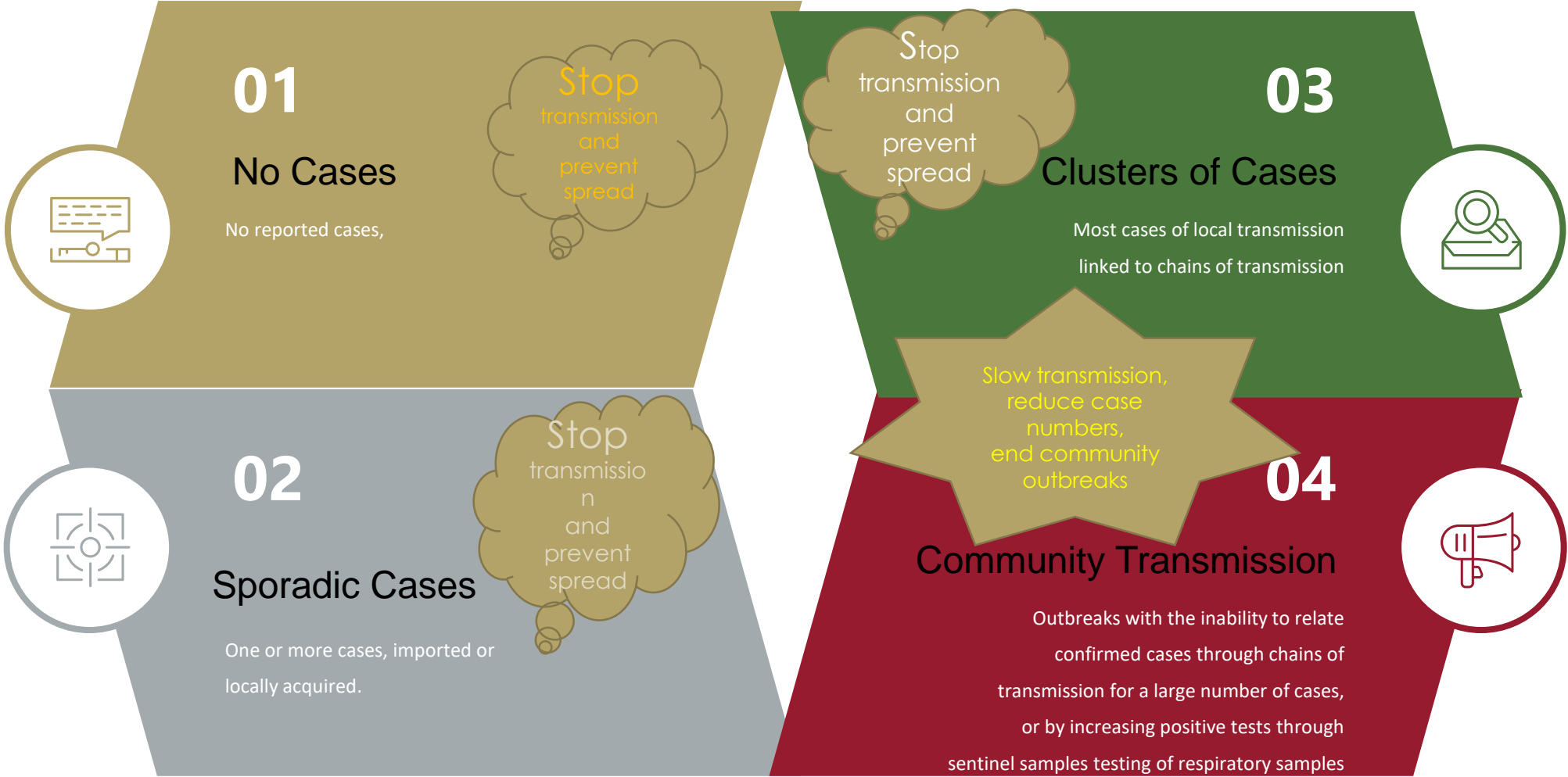
Acknowledgements



- SSW Executive team, Health worker, Humana resources, Integrated Services, every other employee
- Organizers of the Webinar
- Minerals Council of South Africa (MCSA)

COVID-19 Transmission Scenarios, WHO

WHO Interim Guideline, 7 March 2020



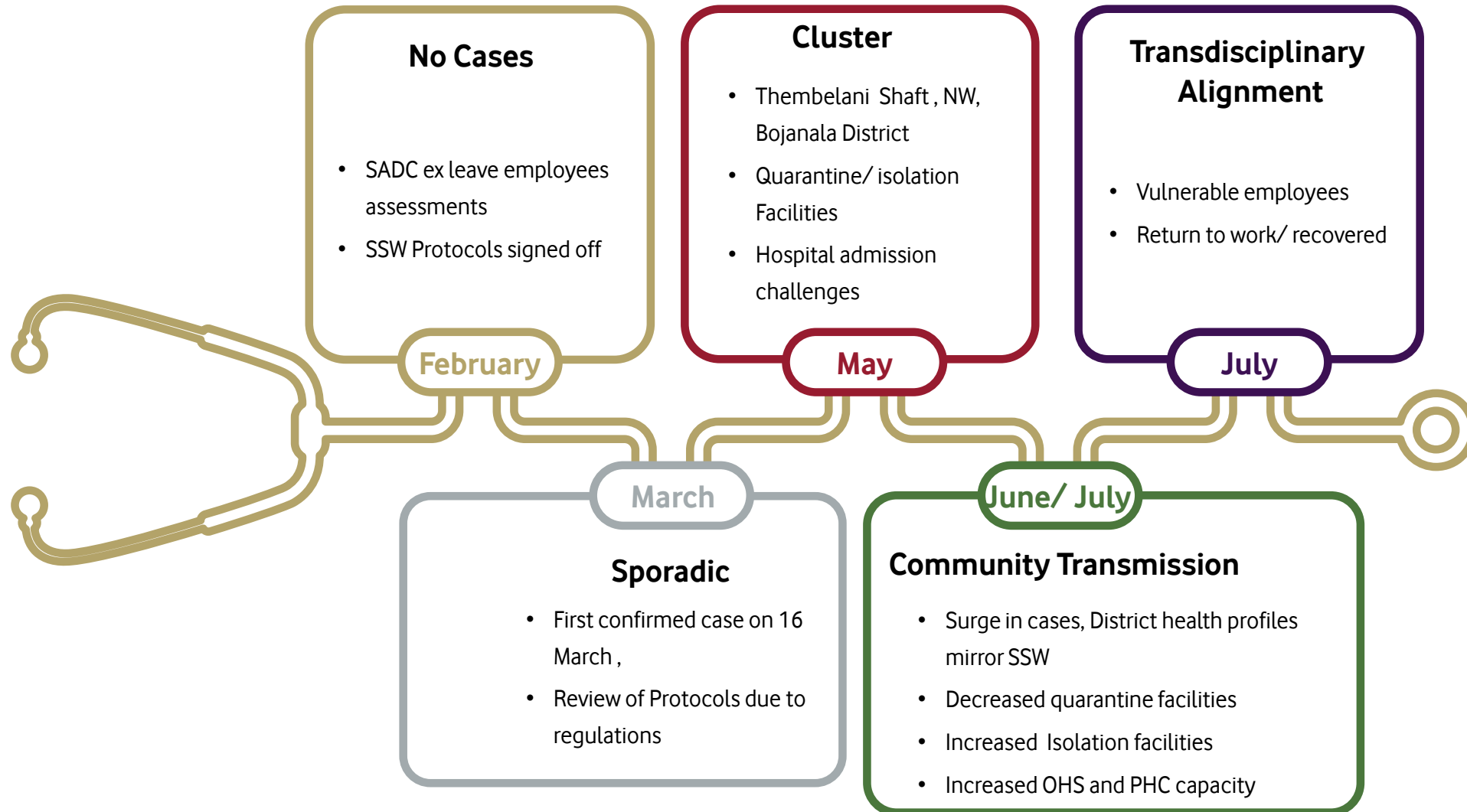
Persons Under Investigation (PUI) Accountability

WHO Health Systems Framework, 2010



TIMELINE

Critical preparedness, readiness and response actions for COVID-19, **WHO/ SSW**



your risk of **coronavirus** infection



Clean hands with soap and water
or alcohol-based hand rub

Cover nose and mouth when coughing and
sneezing with tissue or flexed elbow



Avoid close contact with anyone with
cold or flu-like symptoms

Thoroughly cook meat and eggs



Avoid unprotected contact with live
wild or farm animals



COVID-19 Progressive Daily Report

03 August 2020

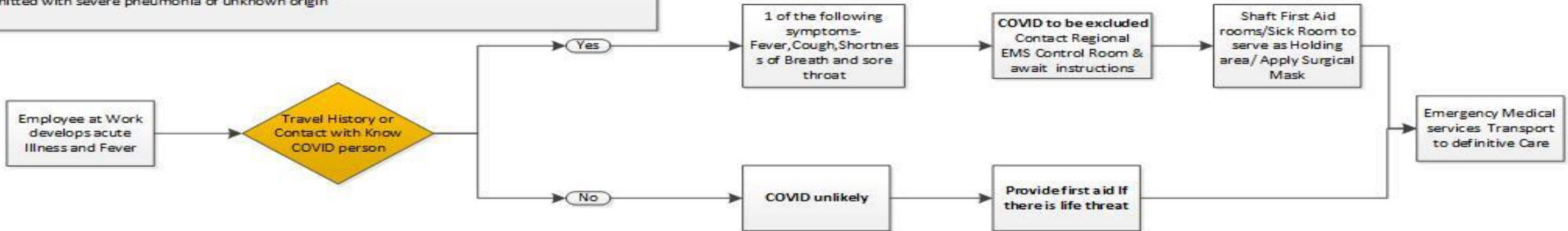
PUI Management

PUI Diagnostic Criteria
 Persons with acute respiratory illness plus 1 of the following

- Fever >38 or History of Fever
- Dry Cough
- Sore Throat
- Shortness of Breath

Characteristics of persons at Highest Risk
 Persons at a highest risk are those who have an acute respiratory illness and who in the 14 days prior to onset of symptoms met at least one of the following epidemiological criteria

- Close contact with a confirmed or probable case of COVID 19 or
- Worked in or attended a health facility where patients with COVID 19 are treated
- Travel to areas of on-going community transmission (Consult NICD Website)
- Admitted with severe pneumonia of unknown origin

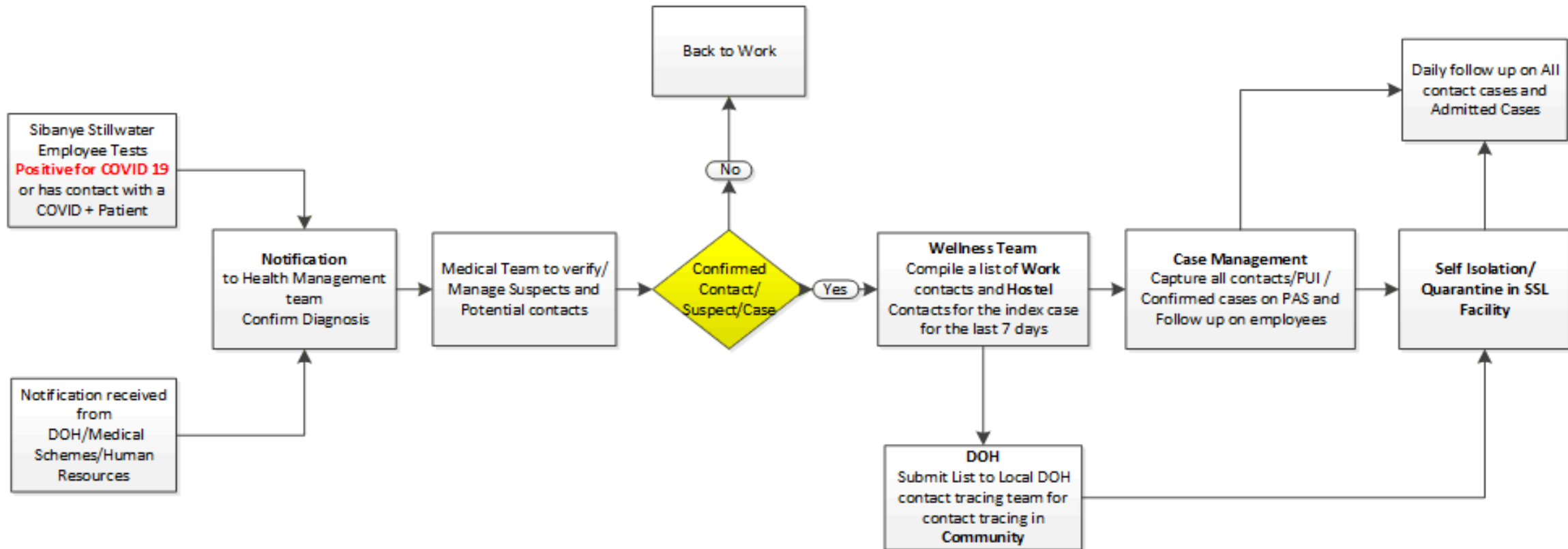


EMS Contact Numbers SRPM			
ER 24 On Site Control Room		ER 24 Road Operations Control Room	
ALS Paramedic	084124 0818767111 OPS crew 0826799220 Hannes ALS on site Paramedic	Paramedic	084124 0636988594 OPS Paramedic 0768571943 Sean Ferguson
NETCARE 911 Rustenburg			
Control Room	0815740846 0815853781	Paramedics	0815626651 0815153413
Marikana Contact Numbers			
Netcare 911 On Site Marikana		Netcare 911 Limpopo	
Control Room	014 5712311 010 2098380	Control Room	015 633 8233 landline 015 633 8218 (if dialling from cell phone)
Netcare Control	082911	Paramedic	082911 082 560 8463 081 632 9783 072 413 2052/ 062 069 0927
ALS Paramedic	082 387 4329 0827038351 0823095440 0823372628		
NETCARE 911 Road Operations			
Control Room	082911	Paramedics	061 457 7143

Gold Operations EMS CONTROL ROOMS			
Kloof /Driefontein/ Operations		FREE STATE Operations	
EMS Control Room 018 7881055/1063		EMS Control Room 057 3914495	
Paramedics- 0828810707/0813598497/0716700729		Paramedics- 0845523154/0817584602	
Surface Mines and Remote Locations- ER24			
Control Room	084124	Control Room	017 773 4354 * Speed dial 4354
EMS	0844043724	EMS	082124

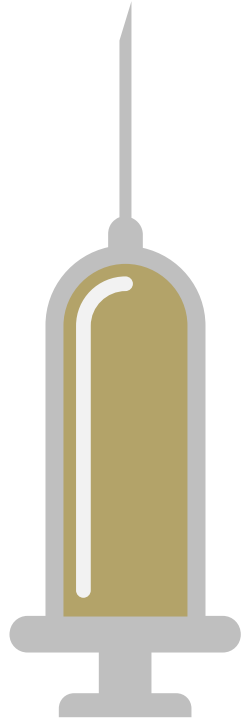
Contact Tracing

REVISIONS 01			
REV	COVID 19 Contact Tracing Procedure	30 th March 2020	APPROVED



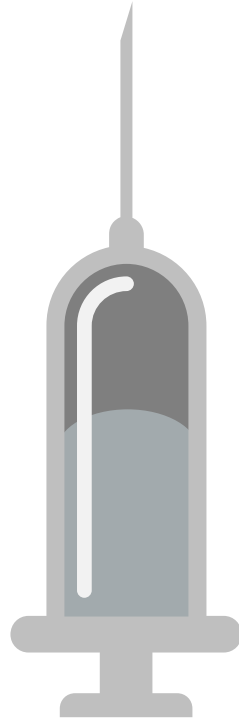
Trigger for PUI/ Contact to SARS-CoV-2

SSW Employees have 100% Health Coverage



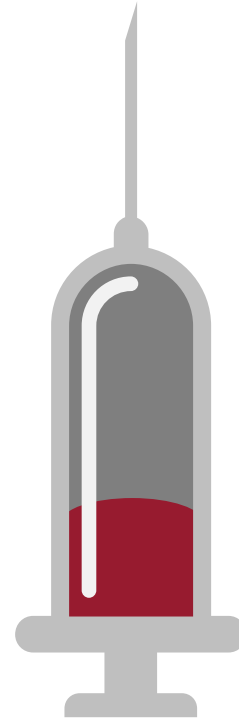
Primary Health

- Insured (Medical Schemes)
- Uninsured



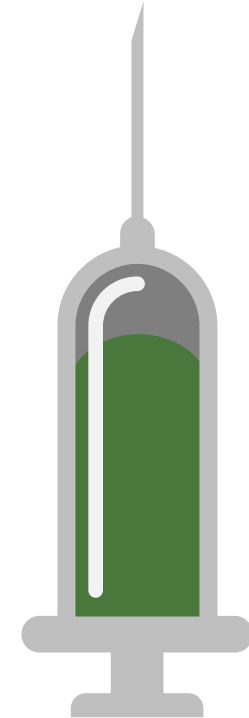
Occupational Health

- Routine Certifications
- Post De-Isolation



Hospital Admissions

- For purposes of contact tracing, sick leave
 - Private Health Professionals



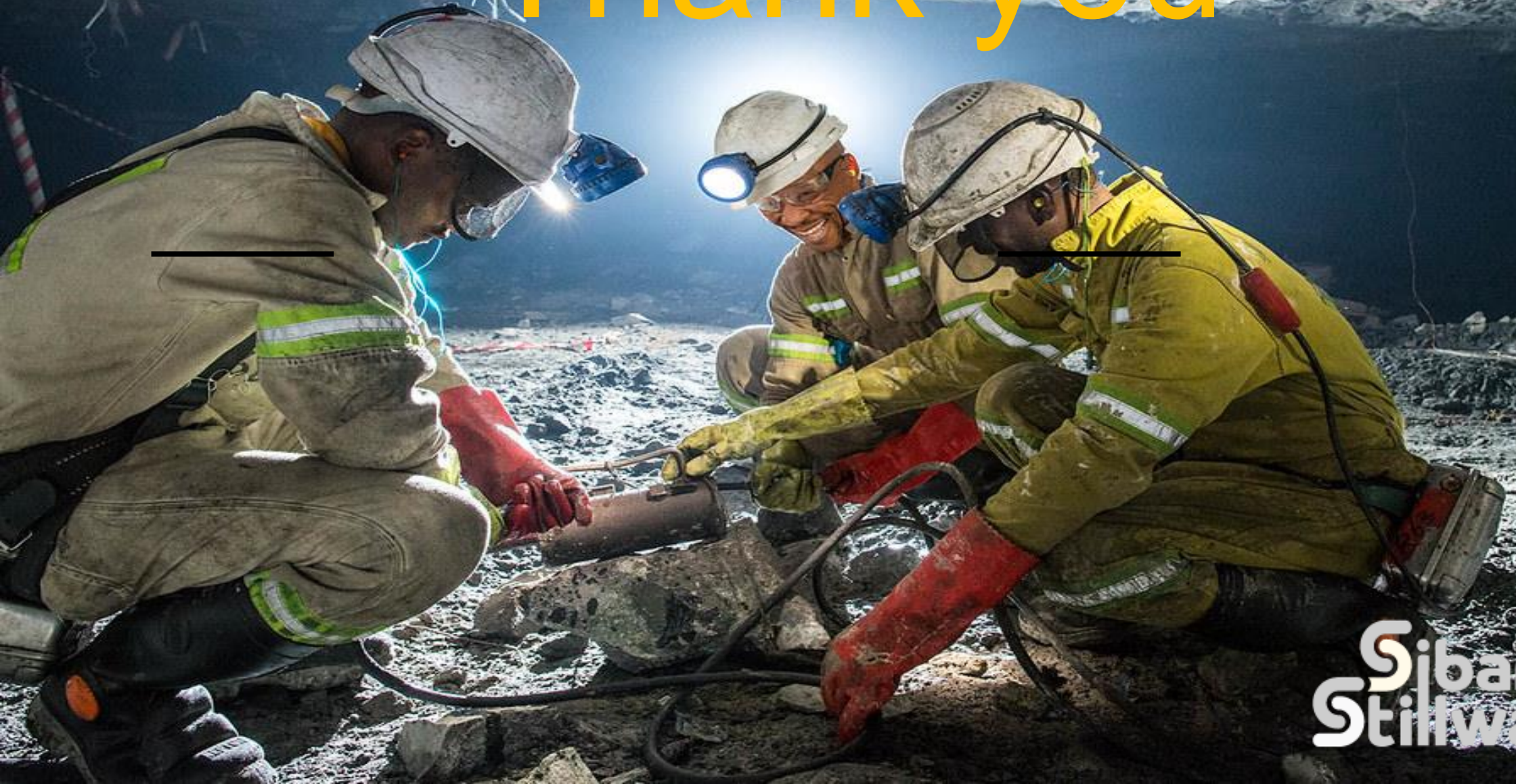
Family Cases

- Disclosed contact tracing
- Deaths notification to SSW

Conclusion

- Employees become PUIs at **home, work and in communities health facilities, hospitals**, etc.
- At the current level of community transmission, **private sector health care professionals contribute** hugely in the diagnosis of COVID-19.
- COVID-19 is a **transdisciplinary condition** as such all stakeholders must work together in companies and communities
- **Mental Health of Healthcare workers** is a challenge
- Public health measures remain the most important preventative tools as the science of pharmaceutical intervention is **limited to health care facilities** (hospital high care and ICUs)

Thank you



we are one
**Sibanye
Stillwater**