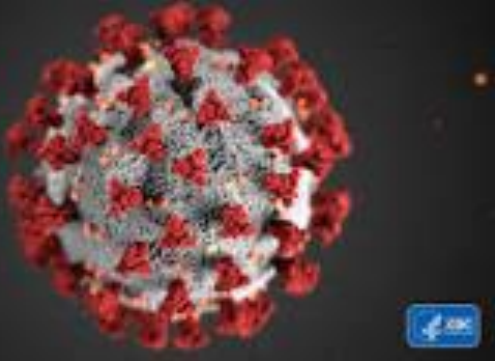


Management of persons under investigation (PUIs) for COVID19:



Kim Davies

SASOHN Past President

+27 833842818

Email: davies.kim1@gmail.com



SASOHN
SOUTH AFRICAN SOCIETY OF
OCCUPATIONAL HEALTH
NURSING PRACTITIONERS
Registered Public Benefit Organisation (Reg no 8511079153)

Scope

- Management of Person Under Investigation (PUI)
- Screening Tool
- Vulnerable workers
- Quarantine & Isolation facilities
- Staying or working from home
- Challenges



Management of Suspected COVID Case

- Differential Diagnosis
 - Seasonal Influenza
 - Conventional and atypical pneumonia
 - Non-infections causes of dyspnea & or fever
 - Pulmonary emboli
 - Myocardial infarction & heart failure
- Screening Start and End of shift



COVID-19 SCREENING TOOL:

PERSONAL NO: _____ **ID NO.** _____ **GENDER:** _____
TITLE: _____ **INITIALS & SURNAME:** _____ **AGE:** _____
SHIFT: _____ **AREA OF WORK:** _____
OCCUPATION: _____
CHRONIC ILLNESSES: YES/NO
Specify: _____

Ser No	Symptoms	Yes/Score	No
	a	b	c
1	Do you have a cough?	1	
2	Do you have a sore throat?	1	
3	Do you have a cold?	1	
4	Do you have a headache?	1	
5	Do you have a fever? (Temperature must be recorded)	1	
6	Are you having any difficulty breathing?	2	
7	Are you having diarrhea?	1	
8	Are you experiencing body aches?	1	
9	Are you experiencing fatigue and/or tiredness?	2	
10	Have you travelled during the past 14 days?	3	
11	Have you travelled to a known COVID-19 infected area?	3	
12	Have you been in direct contact with or taken care of a confirmed COVID-19 patient?	3	
13	Have you attended a funeral in the last week?	3	



0-2	Observe. Practice COVID-19 Protocol
3-5	Advice on hydration, practice COVID-19 protocol, reassess after 48 hours
6-20	Call NDoH Hotline on <u>0800 029 999</u> for advise on further action or WhatsApp <u>0600 12 3456</u>

Member	Referred	
	Not Referred	

Score Interpretation

Details of the Screening official:

Personal number: _____

Name: _____ Designation: _____

Signature: _____ Date: _____



Management of Suspected COVID Case

- Early identification
- Communication through posters, billboards pamphlets
- Screening of all members employees, contractors and visitors



SASOHN
SOUTH AFRICAN SOCIETY OF
OCCUPATIONAL HEALTH
NURSING PRACTITIONERS
Registered Public Benefit Organisation (Reg no 9511079153)

Management of Suspected COVID Case

- Suspected case

- Ensure mask & hand sanitizer
- Isolation room at workplace
- Health education
- Rapid transfer to health facility if required
- Telephonic follow-up



Vulnerable workers

- Workplace risk assessment
- Work evaluation in terms of workplace & vulnerable workers
- Accommodation
- Contact tracing
- Workplace policy & procedure



COVID-19 RISK REDUCTION FRAMEWORK FOR HEALTHCARE WORKERS

Employers to assess health safety and welfare of employees including:

1. Workplace assessment

2. Workforce assessment

3. Individual assessment

Age and ethnicity:

- BME ethnicity aged above 55, particularly in those with comorbidities
- white european ethnicity aged over 60



Sex:

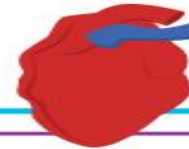
Males at higher risk



Underlying health conditions including:

Clinical vulnerable groups including:

- hypertension
- cardiovascular disease [CVD]
- diabetes mellitus [DM]
- chronic kidney disease [CKD]
- chronic obstructive pulmonary disease [COPD]



Pregnancy:

- All pregnant women should have a risk assessment.
- Women > 28 weeks pregnant or have underlying condition should be recommended to stay at home.
- Women < 28 weeks pregnant should only work in patient facing roles where risk assessment supports this.



Employers to discuss implications and to take appropriate measures to mitigate risk of COVID-19 infection risk to NHS staff.

- A.** Risk reduction framework needs to be used in conjunction with NHS Employers' guidance.
- B.** Employers need to take into consideration health care settings such as primary or community care, hospital settings or environments where aerosol generating procedures are performed.

Return to work

- Medical evaluation to confirm fit to work
- Social distancing
- Strick adherence to hygiene
- Self monitoring
- Seek medical advice if symptoms worsen



Isolation facilities

- Facility should limit & reduce transmission
- Not within confined area
- Near medical facilities
- Ensure disaster management & evacuation plan
- Laundry, fire, ablution, house keeping and food services



Quarantine facilities

- People or group who are asymptomatic, but infected with COVID-19
- People in close contact with an infected person
- High risk or exposure during international travel
- Symptomatic person awaiting testing



Quarantine facilities

- Person awaiting results
- Healthcare workers (asymptomatic) following exposure
- Aircrew



Working form Home

- Recommendation of 50/50
- Not all jobs can be done form home
 - Forklift drivers
 - Sales person
- Private no work no pay
- UIF/TERS claims



Challenges

- Limited resources
 - Equipment
 - Human Resources
- Not enough facilities to isolate persons
- Psycho - social
- Emotional strain
- Economical strain on persons



Challenges

- Implementation of guidelines/regulation by different OHP, HR personnel, etc
- Employees lying about symptoms to be able to work
- Non-compliance to PPE, Physical distancing, hand washing
- Non-compliance to regulations
- Anxiety and fear among employees

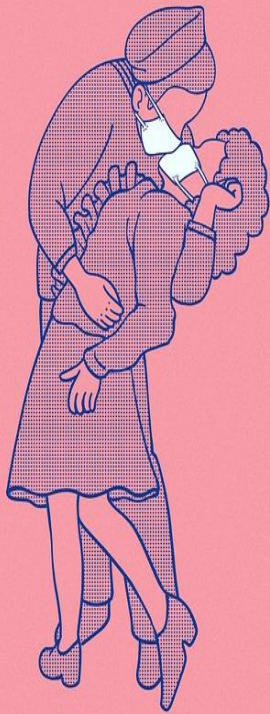


How can I prevent COVID-19?



Questions

Mr. President, about the masks you've sent so far...



SASOHN
SOUTH AFRICAN SOCIETY OF
OCCUPATIONAL HEALTH
NURSING PRACTITIONERS
Registered Public Benefit Organisation (Reg no 3571079153)