



# Reporting, Notifying and Contact Tracing



## Reporting

- **All positive cases** in your workplace to be reported to Department of Health and Department of Employment and Labour. (DoEL OHS COVID19 Directive)
- **All work related COVID19 positive cases** to be reported to the regional chief inspector and compensation commissioner. (OHS Act and COID Act)

## Notifying

- **Notifiable Medical Conditions** (NMC) are of public health importance. Surveillance of NMCs involves the systematic collection, analysis and use of epidemiologic data to provide scientifically proven and accurate information to detect and act against public health threats rapidly..

## Contact tracing

- Although this is the responsibility of Regional CDC and DOH there is an expectation on employers to assist with to **contact tracing at their workplaces**



# Reporting

DoEL OHS COVID19  
Directive



Refer to OHS Act section 24 &  
25



Report to Chief inspector  
regarding Occupational  
Disease



Email WCL 1 form to your  
regional Inspector

DoEL Directive for workplace  
acquired COVID 19



Refer to COVID Act Section 65



Compensation for  
Occupational Disease



Could be done manually or  
online (Dr. Jan Lapere will  
present more on this)

# Department of Employment and Labour

## Provincial office contacts

Province	Provincial Chief Inspector	OHS Specialist	Contact numbers
Gauteng	Michael Msiza	Lesibe Raphela	076 764 9964
	<a href="mailto:Michael.Msiza@labour.gov.za">Michael.Msiza@labour.gov.za</a>	<a href="mailto:Lesibe.Raphela@labour.gov.za">Lesibe.Raphela@labour.gov.za</a>	
KwaZulu-Natal	Edward Khambula	Sandile Kubheka	060 994 2436
	<a href="mailto:Edward.Khambula@labour.gov.za">Edward.Khambula@labour.gov.za</a>	<a href="mailto:Sandile.Kubheka@labour.gov.za">Sandile.Kubheka@labour.gov.za</a>	
Eastern Cape	Lucky Mkhonto	Kulungile Nkanjeni	060 992 7332
	<a href="mailto:Lucky.Mkhonto@labour.gov.za">Lucky.Mkhonto@labour.gov.za</a>	<a href="mailto:Kulungile.Nkanjeni@labour.gov.za">Kulungile.Nkanjeni@labour.gov.za</a>	
Western Cape	David Esau	Fezeka Ngalo	082 791 8092
	<a href="mailto:David.Esau@labour.gov.za">David.Esau@labour.gov.za</a>	<a href="mailto:Fezeka.Ngalo@LABOUR.gov.za">Fezeka.Ngalo@LABOUR.gov.za</a>	
Northern Cape	Ivan Vass	Isaac Mohapi	072 469 3689
	<a href="mailto:Ivan.Vass@labour.gov.za">Ivan.Vass@labour.gov.za</a>	<a href="mailto:isaac.mohapi@labour.gov.za">isaac.mohapi@labour.gov.za</a>	
North West	Boikie Mampuru	Lucia Ramusi	082 490 0808
	<a href="mailto:Boikie.Mampuru@labour.gov.za">Boikie.Mampuru@labour.gov.za</a>	<a href="mailto:Lucia.Ramusi@labour.gov.za">Lucia.Ramusi@labour.gov.za</a>	
Limpopo	Phaswane Tladi	Carol Mthethwa	071 684 9584
	<a href="mailto:Phaswane.Tladi@labour.gov.za">Phaswane.Tladi@labour.gov.za</a>	<a href="mailto:Carol.Mthethwa@LABOUR.gov.za">Carol.Mthethwa@LABOUR.gov.za</a>	
Mpumalanga	Nonyaniso Njwambe	Nhlahla Mbuyazi	072 461 7999
	<a href="mailto:Nonyaniso.Njwambe@labour.gov.za">Nonyaniso.Njwambe@labour.gov.za</a>	<a href="mailto:Nhlanhla.Mbuyazi@labour.gov.za">Nhlanhla.Mbuyazi@labour.gov.za</a>	
Free State	Manelisi Luxande	Makalo Khoele	076 047 0282
	<a href="mailto:Manelisi.Luxande@LABOUR.gov.za">Manelisi.Luxande@LABOUR.gov.za</a>	<a href="mailto:MAKALOMATTHEWS.Khoele@labour.gov.za">MAKALOMATTHEWS.Khoele@labour.gov.za</a>	

With regard to doctor's reporting, if it is for the notification of an occupational disease:  
Send the notification to this email address - [Tibor.Szana@labour.gov.za](mailto:Tibor.Szana@labour.gov.za)



# Notification of a Notifiable Medical Condition

- NMC national surveillance system acquires information from national, regional and local levels to:
  - Timeously detect and respond to public health threats in order to prevent disease outbreaks;
  - Estimates burden of priority diseases and identify populations at risk;
  - Monitor place, person and time trends in priority diseases of public health importance; and
  - Direct public health interventions and inform policy decisions.
- Every doctor or nurse (health care provider) in both the public and private health sector who diagnoses a patient with any one of the NMC must report the case. Failure to report a NMC is a criminal offense.



# Paper based notification (also refer to SOP for NMC reporting)

1. Complete the NMC Case Notification Form.
  2. Send the NMC Case Notification Form to NMCsurveillanceReport@nicd.ac.za or fax to 086 639 1638 or NMC hotline 072 621 3805. Form(s) can be sent via sms, whatsapp, email, fax.
  3. Send a copy to the NMC focal person at Sub-District/District (details given on the cover page of the NMC booklet).
- <https://www.nicd.ac.za/notification-process/>




# Electronic notification via the NMC APP

- (Download the NMC APP from the NICD website (NMC page) or via your cell phone app store. Refer to the NMC APP user manuals)
- 1. Capture the NMC case details onto the NMC mobile or web APP (New Case tab).
- 2. Upon completion of data capture, save the data and the notification will automatically be sent to all relevant focal people at Health Establishment, Sub-District, District, Province & National.
- <https://www.nicd.ac.za/notification-process/>

# NMC App


nicd.ac.za/notifiable-medical-conditions/

 NATIONAL INSTITUTE FOR COMMUNICABLE DISEASES  
Division of the National Health Laboratory Service


COVID-19 ABOUT US CENTRES OUR SERVICES NOTIFIABLE ME

OVERVIEW  
NOTIFICATION FORMS  
NOTIFICATION PROCESS  
NMC COVID-19 DOCUMENTS

## DOWNLOAD OUR ELECTRONIC APP

  
WEB PORTAL

Use the above link from a desktop or laptop computer to access the Web Application.  
[Click here to register.](#)

  
ANDROID APP

Using the above link will make this a free download. You will not incur any data charges for the download.





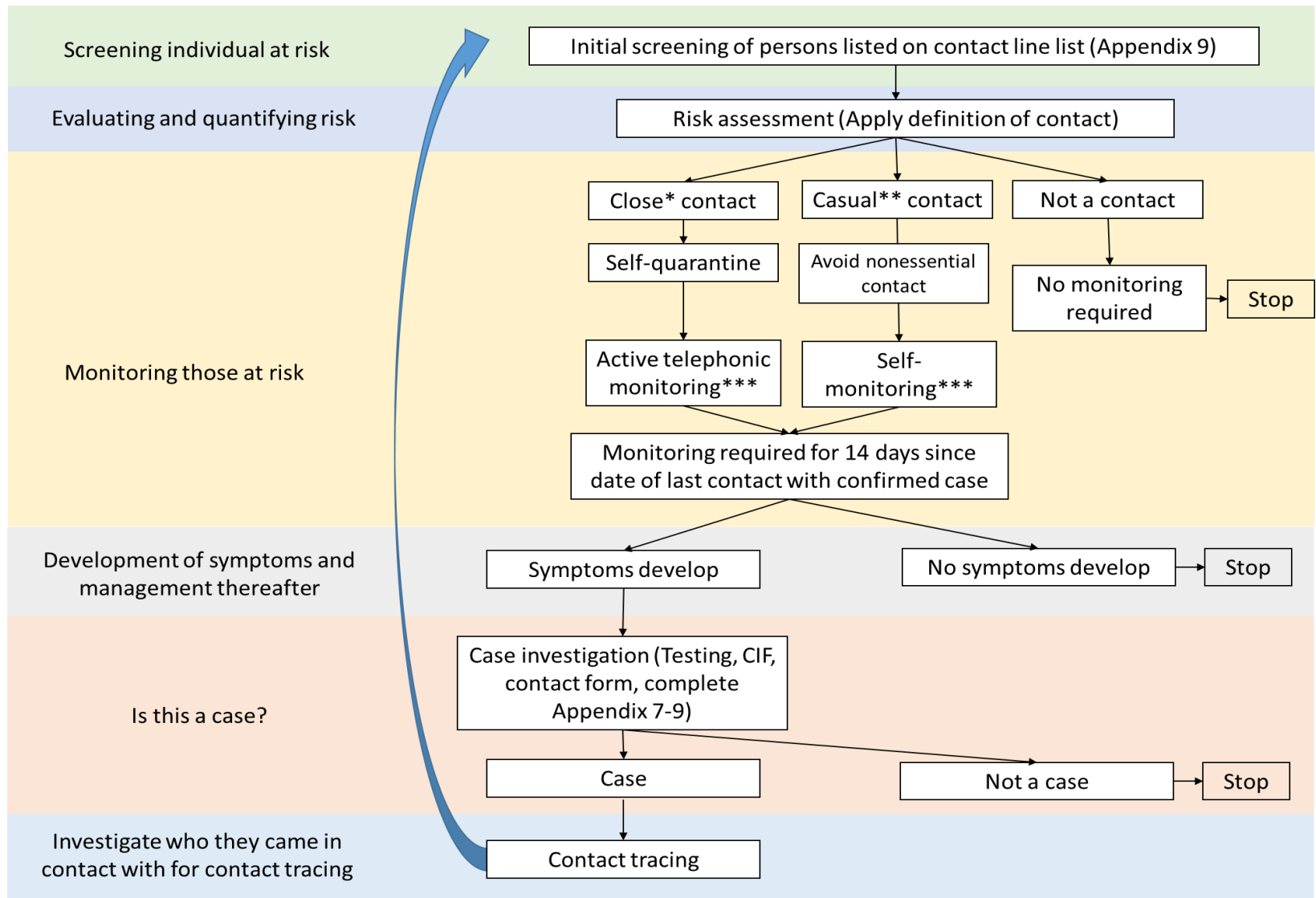
# Contact tracing

- COVID19 Directive from DoEL stipulate that employers must give administrative support to any contact tracing measures implemented by the Department of Health.
- Detailed history taking about:
  - Places visited within work environment – since 2 days before symptom onset
  - Persons who COVID-19 worker come into contact with at work, including visitors and contractors and those workers they share transport with and/or those workers they communally socialise with since 2 days before symptom onset
- Conduct contact listing



# Contact Identification at Work

- Detailed history taking about:
  - Places visited within work environment – since 2 days before symptom onset
  - Persons who COVID-19 worker come into contact with at work, including visitors and contractors and those workers they share transport with and/or those workers they communally socialise with since 2 days before symptom onset
- Conduct contact listing



\* Close contact: A person having had face-to-face contact ( $\leq 2$  metres) or was in a closed environment with a 2019-nCoV case; this includes, amongst others, all persons living in the same household as a 2019-nCoV case and, people working closely in the same environment as a case. A healthcare worker or other person providing direct care for a 2019-nCoV case, while **not** wearing recommended personal protective equipment or PPE (e.g., gowns, gloves, NIOSH-certified disposable N95 respirator, eye protection). A contact in an aircraft sitting within two seats (in any direction) of the 2019-nCoV case, travel companions or persons providing care, and crew members serving in the section of the aircraft where the index case was seated.

\*\* Casual contact: Anyone not meeting the definition for a close contact but with possible exposure.

\*\*\*Monitoring methods: Active-telephonic monitoring: NICD call centre will phone person who is home-quarantined each day for a symptom report; Self-monitoring: person to consult healthcare practitioner in the event of symptom development.



# Contact details of the National Epidemiology and Surveillance Team members

Institution	Name	Email address	Telephone number
National Department of Health	Tsakani Furumele	<a href="mailto:Tsakani.Furumele@health.gov.za">Tsakani.Furumele@health.gov.za</a>	012 395 8096 082 419 9686
	Lusizo Ratya	<a href="mailto:Lusizo.Ratya@health.gov.za">Lusizo.Ratya@health.gov.za</a>	012 395 8145 082 703 2784
National Institute for Communicable Diseases	Sibongile Walaza	<a href="mailto:sibongilew@nicd.ac.za">sibongilew@nicd.ac.za</a>	083 657 4741
	Genevieve Ntshoe	<a href="mailto:genevien@nicd.ac.za">genevien@nicd.ac.za</a>	011 386 2008 082 805 9085
	Jackie Kleynhans	<a href="mailto:jackiek@nicd.ac.za">jackiek@nicd.ac.za</a>	011 555 0383 084 763 5417



# Provincial CDC Coordinators

<b>Eastern Cape</b>	Thomas Dlamini Nosiphiwo Mgobo	<a href="mailto:thomas.dlamini@echealth.gov.za">thomas.dlamini@echealth.gov.za</a> <a href="mailto:nosiphiwo.mgobo@echealth.gov.za">nosiphiwo.mgobo@echealth.gov.za</a>	083 378 0189 060 579 9027
<b>Free State</b>	Dikeledi Baleni Babsy Nyokong	<a href="mailto:balenid@fshealth.gov.za">balenid@fshealth.gov.za</a> <a href="mailto:nyokongb@fshealth.gov.za">nyokongb@fshealth.gov.za</a>	083 757 8217 082 463 7499
<b>Gauteng</b>	Chika Asomugha Caroline Kesebilwe	<a href="mailto:Chika.Asomugha@gauteng.gov.za">Chika.Asomugha@gauteng.gov.za</a> <a href="mailto:Caroline.kesebilwe@gauteng.gov.za">Caroline.kesebilwe@gauteng.gov.za</a>	082 330 1490 083 490 8165
<b>KwaZulu-Natal</b>	Premi Govender	<a href="mailto:premi.govender@kznhealth.gov.za">premi.govender@kznhealth.gov.za</a>	071 609 2505
<b>Limpopo</b>	Marlene Freda Ngobeni Mashudu P. Mudau	<a href="mailto:Marlene.Ngobeni@dhsd.limpopo.gov.za">Marlene.Ngobeni@dhsd.limpopo.gov.za</a> <a href="mailto:Prudence.Mudau@dhsd.limpopo.gov.za">Prudence.Mudau@dhsd.limpopo.gov.za</a>	079 491 1909 071 678 3864
<b>Mpumalanga</b>	Mandla Zwane Hluphi Mpangane	<a href="mailto:MandlaZw@mpuhealth.gov.za">MandlaZw@mpuhealth.gov.za</a> <a href="mailto:hluphim@mpuhealth.gov.za">hluphim@mpuhealth.gov.za</a>	082 229 8893 076 522 8511
<b>North West</b>	Chriseldah Lebeko	<a href="mailto:clebeko@nwpg.gov.za">clebeko@nwpg.gov.za</a>	082 421 7985
<b>Northern Cape</b>	Gloria Hottie	<a href="mailto:hottieg@webmail.co.za">hottieg@webmail.co.za</a>	072 391 3345 053 830 0529
<b>Western Cape</b>	Charlene Jacobs	<a href="mailto:Charlene.Jacobs@westerncape.gov.za">Charlene.Jacobs@westerncape.gov.za</a>	072 356 5146 021 483 9964



# Thank You!

Enquiries : [info@nioh.ac.za](mailto:info@nioh.ac.za) or  
**0800 21 21 75**

 <b>COVID-19</b>	<b>COVID-19 Workplace Preparedness &amp; Prevention</b> <b>HEALTHY, SAFE &amp; SUSTAINABLE WORKPLACES</b> <b>Workplace Hotline: 0800 2121 75</b> www.nioh.ac.za   info@nioh.ac.za   twitter: @nioh_sa	 <b>NATIONAL HEALTH LABORATORY SERVICE</b>
	<b>The NIOH website is ZERO-RATED</b> by Vodacom, MTN, Rain, MWeb, Telkom & Internet Solutions. <small>No data charges apply for users of these mobile network providers. All content and resources on this website can be browsed and downloaded for free, excluding YouTube viewing and downloading.</small>	 <b>NATIONAL INSTITUTE FOR OCCUPATIONAL HEALTH</b> <small>Division of the National Health Laboratory Service</small>