



Contact Tracing in the Workplace

Dr Samantha Iyaloo

Occupational Medicine Specialist

National Institute for Occupational Health a division of the NHLS

Email: info@nioh.ac.za

Website: <http://www.nhls.ac.za>; <http://www.nioh.ac.za>; <http://www.nicd.ac.za>

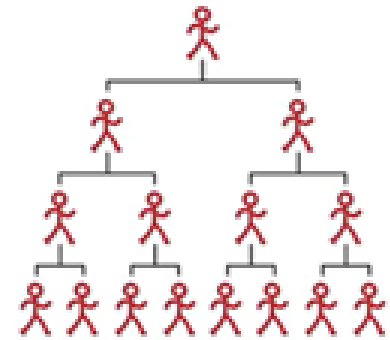


What is Contact Tracing?

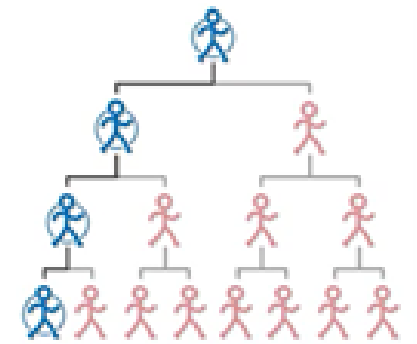
- Identification and follow-up of persons who may have come into contact with an infected person
- Crucial component of epidemiological investigation and active surveillance
- Three basic elements
 - Contact identification
 - Contact listing
 - Contact follow-up

Purpose of Contact Tracing

- To contain the outbreak by interrupting the transmission cycle

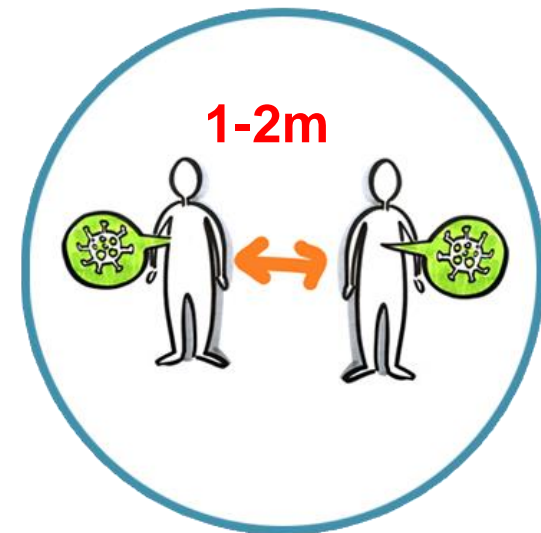


- Objectives:
 - To timeously identify, trace and monitor contacts of COVID-19
 - To detect and monitor all persons at risk of contracting COVID-19
 - To prevent spread in the exposed contacts



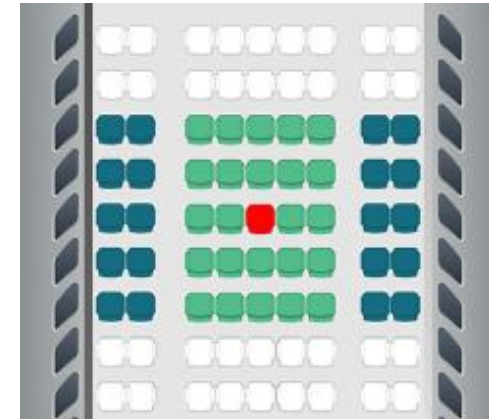
Definition of a Contact

- A person who may have come into contact with an infected person – in this instance a person infected with COVID-19
- Different types of contacts
 - Close contact or high risk exposure (HRE)
 - Casual contact or low risk exposure (LRE)



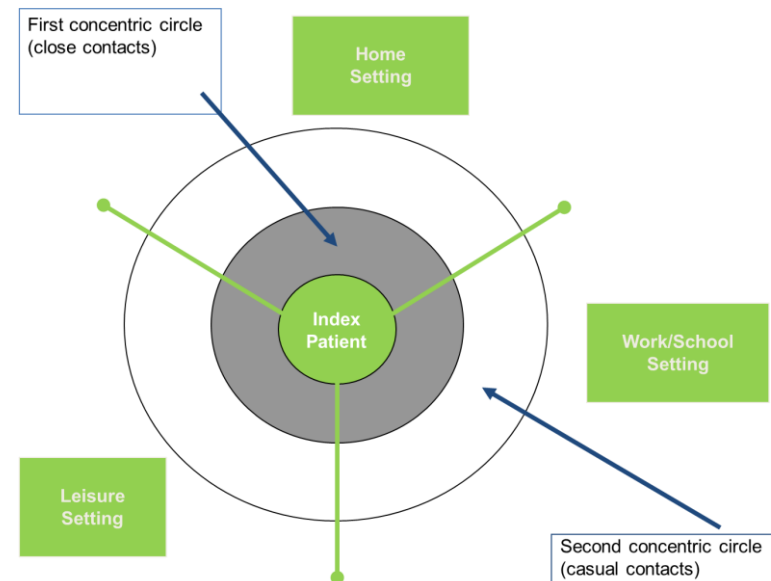
Close Contact or HRE

- Any person having had face-to-face contact (≤ 1 metres) with a COVID-19 case for more than 15 minutes with either no PPE or with PPE failure. (all criteria should be present)
- A contact in an aircraft sitting within two seats (in any direction) of the COVID-19 case
 - travel companions or persons providing care, and crew members serving in the section of the aircraft where the index case was seated



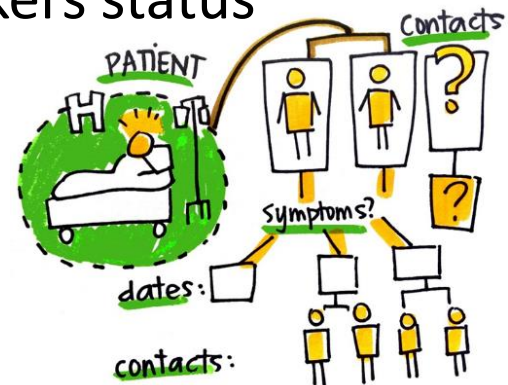
Casual Contact or LRE

- Anyone not meeting the definition for a close contact but with possible exposure
- LRE - > 1 metre away from a COVID-19 case for <15 mins
Or <1 metre but either HW or source wearing appropriate PPE



When is Contact Tracing Initiated?

- Identification of contacts and contact listing should be completed for each person under investigation/suspected case at the time of sample collection and completion of the investigation form
- Contact follow-up should start immediately after laboratory confirmation of a COVID-19 case
- C19 Directive places greater role on workplaces to conduct contact tracing
- As soon as a company becomes aware of a workers status
- Contact tracing can commence
- Smaller companies can gain assistance from
- Provincial or District DOH





Contact Identification at Work

- Detailed history taking about:
 - Places visited within work environment – since 2-3 days before symptom onset
 - Persons who COVID-19 worker come into contact with at work, including visitors and contractors and those workers they share transport with and/or those workers they communally socialise with since 2-3 days before symptom onset
- Conduct contact listing

Contact Line List



2019-nCoV CONTACT LINE LIST



Complete a contact line list for every case under investigation and every confirmed case

Details of case under investigation/confirmed case		
NICD Identifier _____	Date Symptom Onset _____	DD/MM/YYYY
Surname _____	Name _____	
Contact number _____	Alternative number _____	
Travel (provide details of all: 7 days before onset)		Travelled by Bus <input type="checkbox"/> Plane <input type="checkbox"/>
Air/bus line _____	Flight/bus # _____	Seat # _____

Details of health official completing this form	Today's date
Surname _____	DD/MM/YYYY
Role _____	Name _____
Email address _____	Facility name _____
	Telephone number(s) _____

Details of contacts (With close contact¹ 7 days prior to symptom onset, or during symptomatic illness.)


	Surname	First name(s)	Sex (M/F)	Age (Y)	Relation to case ²	Date of last contact with case	Place of last contact with case (Provide name and address)	Residential address (for next month)	Phone number(s), separate by semicolon	HCW? ³ (Y/N) if Yes, facility name
1						DD/MM/YYYY				
2						DD/MM/YYYY				
3						DD/MM/YYYY				
4						DD/MM/YYYY				
5						DD/MM/YYYY				
6						DD/MM/YYYY				
7						DD/MM/YYYY				
8						DD/MM/YYYY				


¹ Close contact: A person having had face-to-face contact (≤2 metres) or was in a closed environment with a 2019-nCoV case; this includes, amongst others, all persons living in the same household as a 2019-nCoV case and, people working closely in the same environment as a case. A healthcare worker or other person providing direct care for a 2019-nCoV case, while not wearing recommended personal protective equipment or PPE (e.g., gowns, gloves, NIOSH-certified disposable N95 respirator, eye protection). A contact in an aircraft sitting within two seats (in any direction) of the 2019-nCoV case, travel companions or persons providing care, and crew members serving in the section of the aircraft where the index case was seated...² Chose from: Aunt, Child, Class mate, Colleague, Cousin, Father, Friend, Grandfather, Grandmother, Healthcare worker taking care of, Mother, Nephew, Niece, Other relative, Uncle. ³ Healthcare worker.



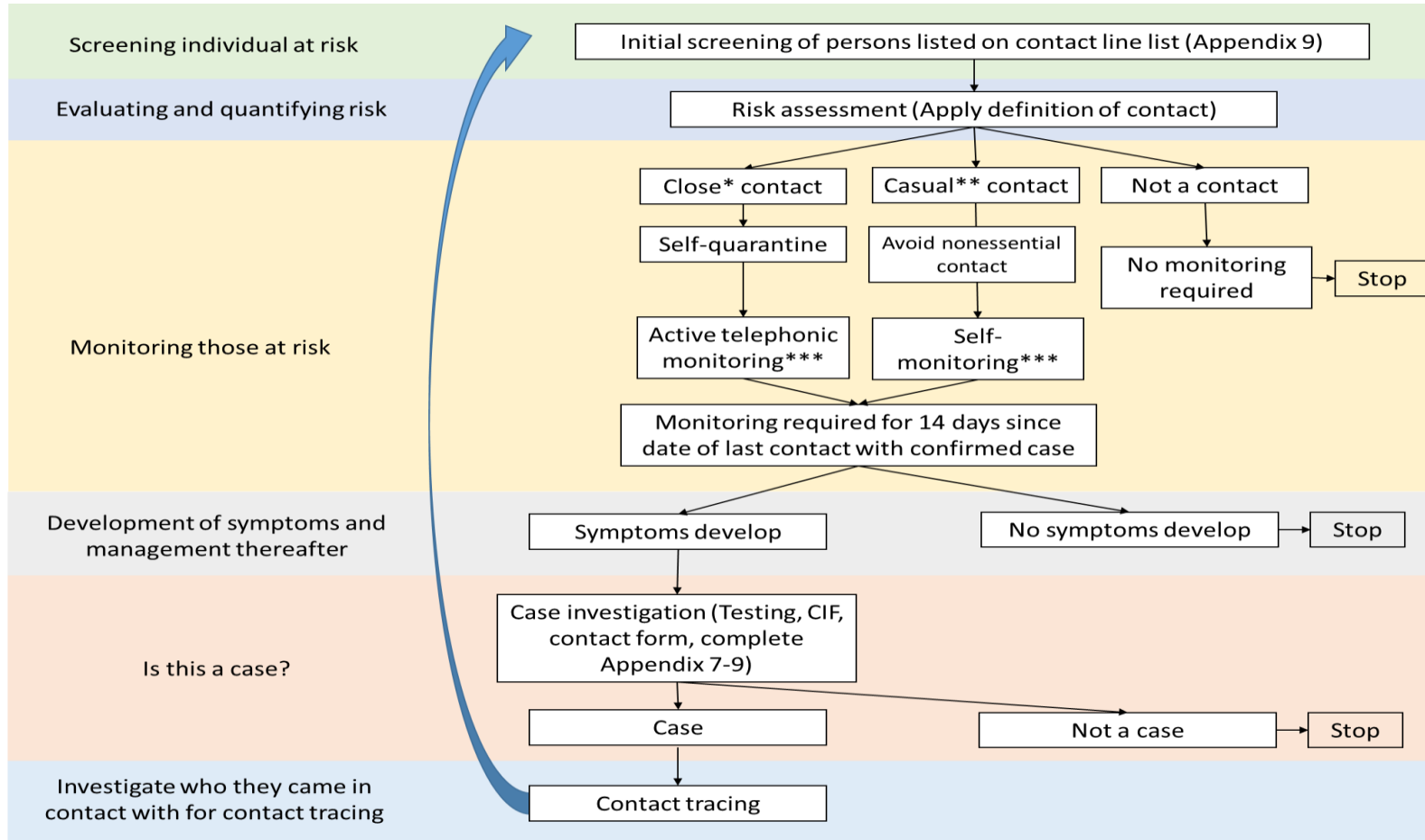
Initial contact with a contact of a confirmed case (step-by-step)

- First contact – try to conduct telephonically at a suitable time (make sure no one is around them)
- Introduce yourself and specify who you are and your role
- Explain the following:
 - Someone that tested positive for COVID-19 indicated that they were in close contact with him/her
 - This means that he/she is at risk of contracting COVID-19 and they need to self-monitor for 14 days since last contact with the confirmed case (give them the date)

- 
- Complete details of the person on the symptom monitoring tool
 - Ask if the person is experiencing any of the listed symptoms on the symptom monitoring tool <https://www.nicd.ac.za/wp-content/uploads/2020/04/Guidance-for-symptom-monitoring-and-management-of-essential-staff-with-COVID-19-related-illness-final-2.pdf>
 - If yes:
 - They should proceed to their nearest health facility for COVID specimen collection, await results, if positive, start new contact tracing and case investigation
 - If not:
 - Continue to monitor for 14 days, then return-to-work
 - Correct PPE should be worn
 - Worker to be advised that he/she should conduct their own screening and should report to the work authority as per their SOP if symptoms develop.

- 
- During monitoring period, person(s) should be asked to self quarantine at home
 - Not go to work, school, church, shops, visit or host friends, etc.
 - If living with other individuals, the contact and their household members should:
 - Perform hand hygiene frequently
 - Keep a safe distance from affected individual (at least 1 meter)
 - Wear a surgical mask when in the same room with affected individual
 - Clean hands immediately after contact with respiratory secretions
 - Improve airflow in the living space by opening windows

Contact Tracing Summary



* Close contact: A person having had face-to-face contact (≤ 2 metres) or was in a closed environment with a 2019-nCoV case; this includes, amongst others, all persons living in the same household as a 2019-nCoV case and, people working closely in the same environment as a case. A healthcare worker or other person providing direct care for a 2019-nCoV case, while **not** wearing recommended personal protective equipment or PPE (e.g., gowns, gloves, NIOSH-certified disposable N95 respirator, eye protection). A contact in an aircraft sitting within two seats (in any direction) of the 2019-nCoV case, travel companions or persons providing care, and crew members serving in the section of the aircraft where the index case was seated.

** Casual contact: Anyone not meeting the definition for a close contact but with possible exposure.

***Monitoring methods: Active-telephonic monitoring: NICD call centre will phone person who is home-quarantined each day for a symptom report; Self-monitoring: person to consult healthcare practitioner in the event of symptom development.



Confidentiality and Privacy

- Confidentiality is the right to have personal identifiable medical info kept private and not released without their consent
 - Unless you agree to it
 - There are limits for COVID-19 – not absolute. It may be shared to protect public health.
 - Only info relevant to the contact tracing must be collected
 - Requests for isolation and quarantine can be mandated and enforced in some instances



Monitoring of Close Contacts of Known COVID-19 Cases

Close contacts under monitoring should be advised to:

- Remain at home
- Avoid social contact
- Do not use public transport, do not travel
- Separate sick room/one area , separate bathroom if possible
- Clean sick room daily, bathroom at least once daily
- Do not share utensils, bedding, towels PPE for cleaner or home carer etc.

They are in Quarantine – they may be infected!



Contact details of the National Epidemiology and Surveillance Team members

Institution	Name	Email address	Telephone number
National Department of Health	Tsakani Furumele	Tsakani.Furumele@health.gov.za	012 395 8096 082 419 9686
	Lusizo Ratya	Lusizo.Ratya@health.gov.za	012 395 8145 082 703 2784
National Institute for Communicable Diseases	Sibongile Walaza	sibongilew@nicd.ac.za	083 657 4741
	Genevieve Ntshoe	genevien@nicd.ac.za	011 386 2008 082 805 9085
	Jackie Kleynhans	jackiek@nicd.ac.za	011 555 0383 084 763 5417



Provincial CDC Coordinators

Eastern Cape	Thomas Dlamini Nosiphiwo Mgobo	thomas.dlamini@echealth.gov.za nosiphiwo.mgobo@echealth.gov.za	083 378 0189 060 579 9027
Free State	Dikeledi Baleni Babsy Nyokong	balenid@fshealth.gov.za nyokongb@fshealth.gov.za	083 757 8217 082 463 7499
Gauteng	Chika Asomugha Caroline Kesebilwe	Chika.Asomugha@gauteng.gov.za Caroline.kesebilwe@gauteng.gov.za	082 330 1490 083 490 8165
KwaZulu-Natal	Premi Govender	premi.govender@kznhealth.gov.za	071 609 2505
Limpopo	Marlene Freda Ngobeni Mashudu P. Mudau	Marlene.Ngobeni@dhsd.limpopo.gov.za Prudence.Mudau@dhsd.limpopo.gov.za	079 491 1909 071 678 3864
Mpumalanga	Mandla Zwane Hluphi Mpangane	MandlaZw@mpuhealth.gov.za hluphim@mpuhealth.gov.za	082 229 8893 076 522 8511
North West	Chriseldah Lebeko	clebeko@nwpg.gov.za	082 421 7985
Northern Cape	Gloria Hottie	hottieg@webmail.co.za	072 391 3345 053 830 0529
Western Cape	Charlene Jacobs	Charlene.Jacobs@westerncape.gov.za	072 356 5146 021 483 9964



Thank You!

Enquiries : info@nioh.ac.za or
0800 21 21 75

 COVID-19	<p>COVID-19 Workplace Preparedness & Prevention HEALTHY, SAFE & SUSTAINABLE WORKPLACES Workplace Hotline: 0800 2121 75 www.nioh.ac.za info@nioh.ac.za twitter: @nioh_sa</p>	 NATIONAL HEALTH LABORATORY SERVICE
	<p>The NIOH website is ZERO-RATED by Vodacom, MTN, Rain, MWeb, Telkom & Internet Solutions. <small>No data charges apply for users of these mobile network providers. All content and resources on this website can be browsed and downloaded for free, excluding YouTube viewing and downloading.</small></p>	 NATIONAL INSTITUTE FOR OCCUPATIONAL HEALTH <small>Division of the National Health Laboratory Service</small>