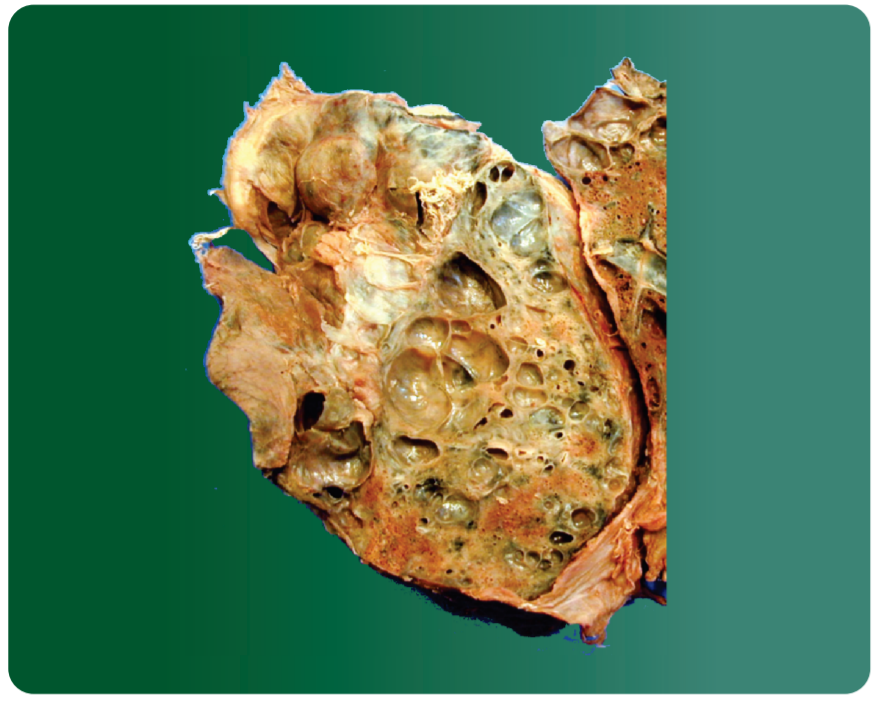


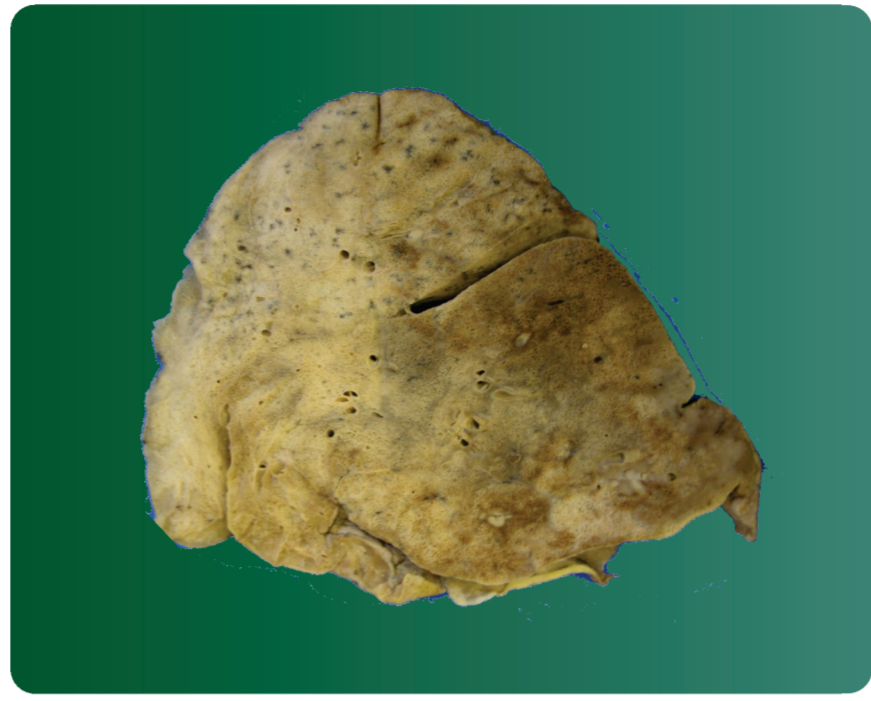
LUNG DISEASES AND WORK

COULD THIS BE HAPPENING TO YOUR LUNGS?



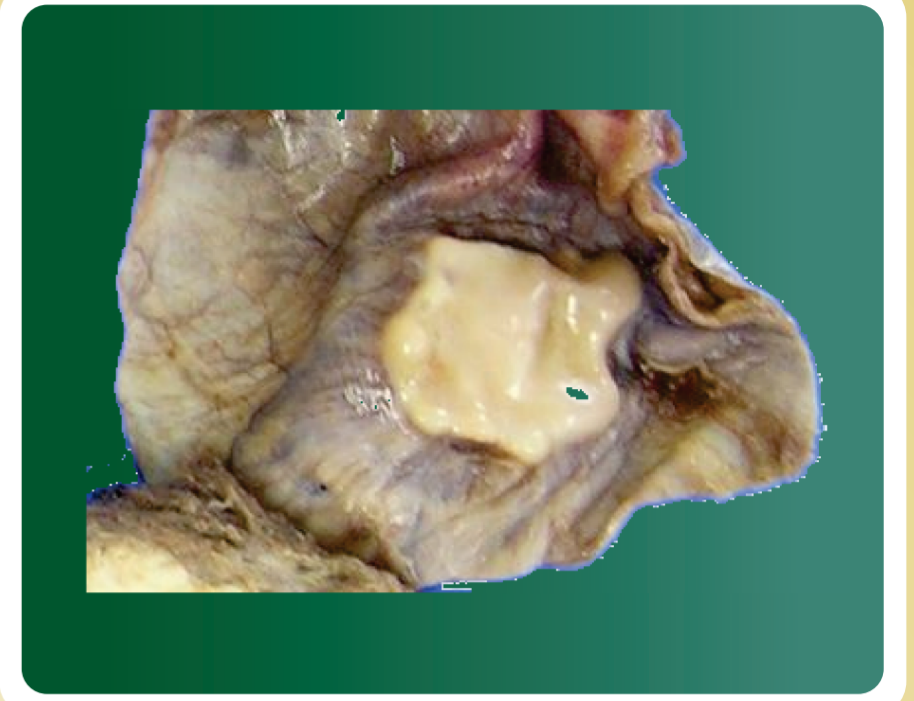
Emphysema

Smoking and working in a dusty place destroyed the air spaces in the lungs of this foundry worker.



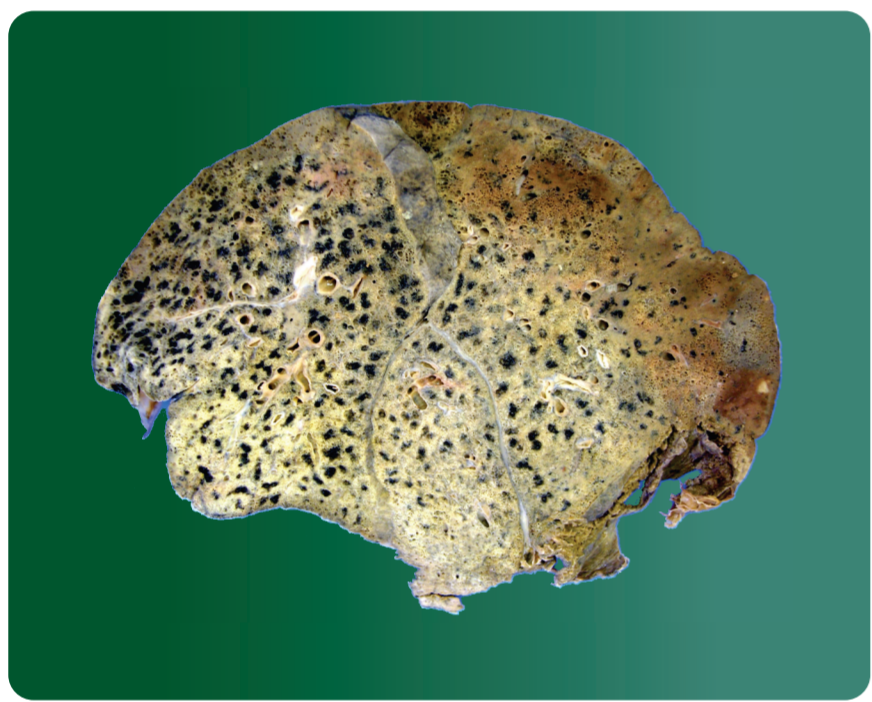
Normal

Lung from a man who neither smoked nor worked in dust.



Asbestos Pleural Plaques

The surface of the lung is thickened and scarred in this asbestos worker.



Silicosis

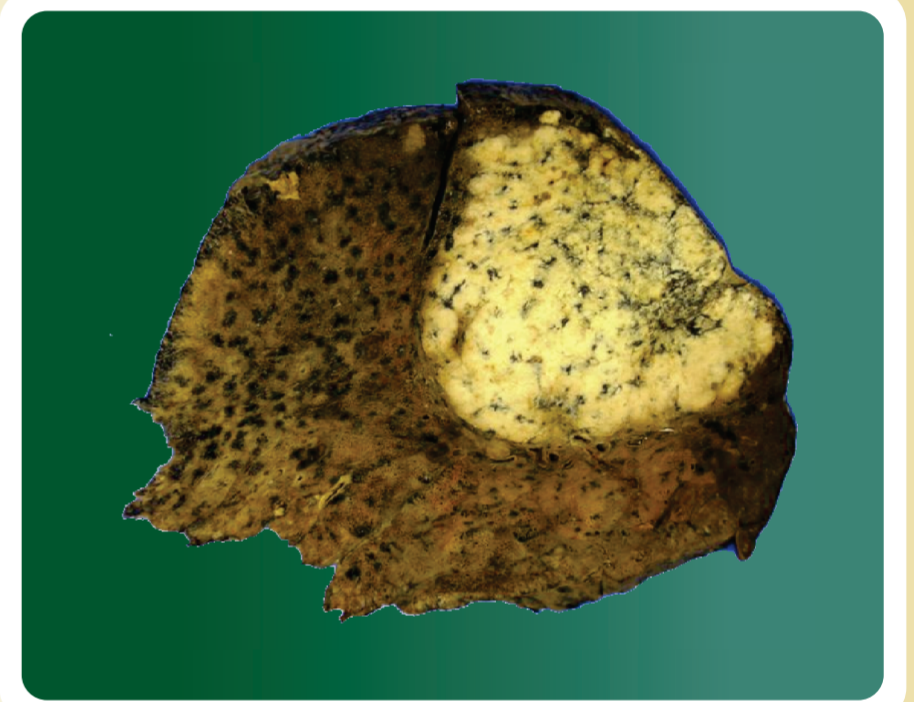
Many small black nodules of scar tissue can be seen in the lung of this gold miner.

DO YOU:

- smoke
- work in a dusty environment
- work with silica
- work with asbestos
- cough a lot?

IF SO:

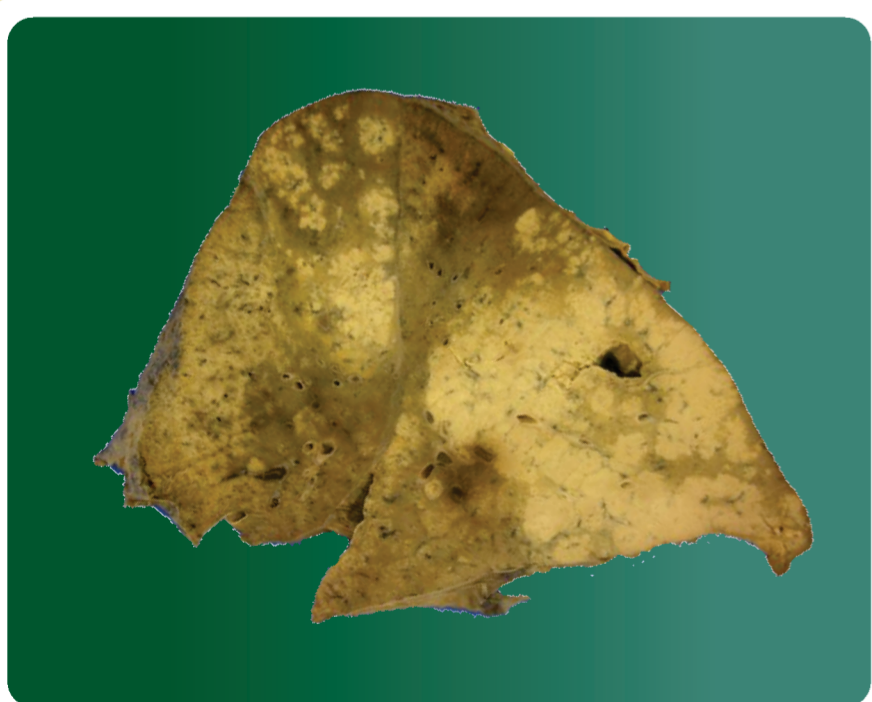
**You may be at risk
of getting one or more
of these diseases**



Lung Cancer

A large white cancer in the lung of a man who smoked for many years.

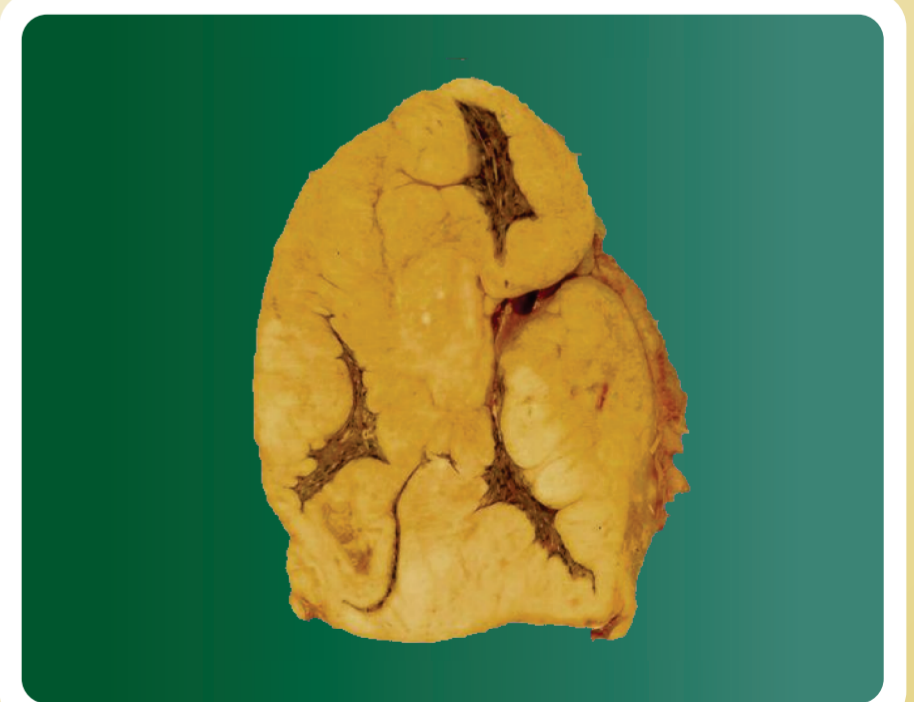
PREVENT THIS FROM HAPPENING:



Tuberculosis

In this lung TB shows as white infected areas and a cavity.

- **Control workplace hazards**
- **Stop smoking**
- **See a doctor**



Malignant Mesothelioma

This is a cancer which can grow on the surface of lungs of asbestos workers.

For more information on how to protect your lungs, talk to occupational health and safety inspectors of the Department of Labour (012) 309 4000 or Department of Minerals and Energy (012) 317 8000, your employer, workers representative, occupational health practitioner, or contact NIOH on (011) 712- 6400.



health

Department:
Health
REPUBLIC OF SOUTH AFRICA